

LOC I-POC	APP CRS	Rwy Idg	4151
110.5	259°	TDZE	1005
		Apt Elev	1014

LOC RWY 26L

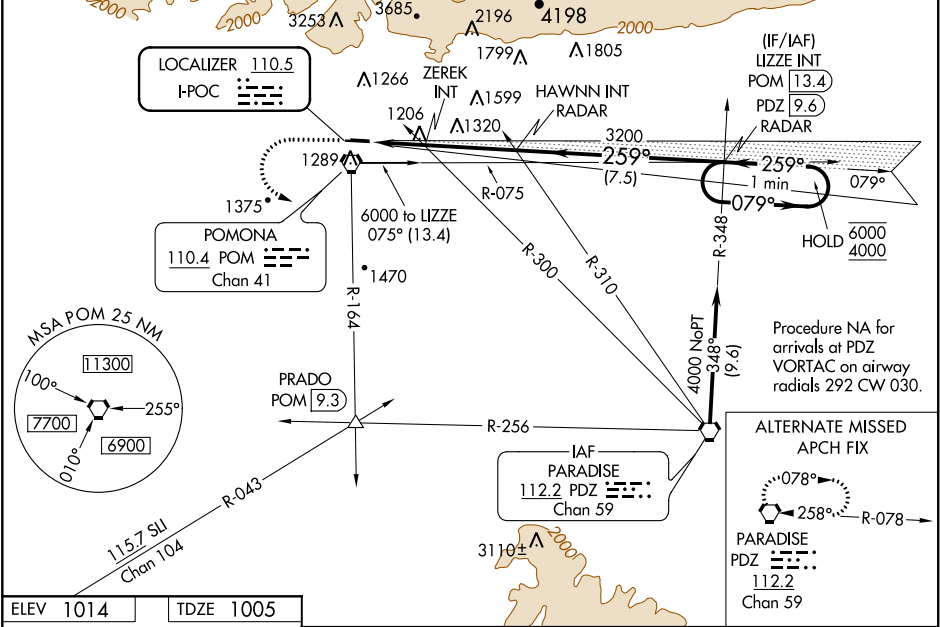
BRACKETT FIELD (POC)

⚠ Circling to Rwy 8L NA at night. Circling NA for Cat C north of Rwy 8L-26R.

⚠ When Circling to Rwy 8R at night, operational VGSI required, remain on or above VGSI glidepath until threshold. Rwy 26L helicopter visibility reduction below ¾ SM NA. When local altimeter setting not received, use Ontario Intl altimeter setting and increase all MDAs 40 feet.

MISSED APPROACH: Climb to 2100 then climbing left turn to 4000 on POM VORTAC R-164 to PRADO INT/POM 9.3 DME and hold.

ATIS	SOCAL APP CON	BRACKETT TOWER★	GND CON	CLNC DEL	UNICOM
124.4	125.5 318.2	RWY 8R/26L 118.2 (CTAF)	RWY 8L/26R 133.3	125.0	121.875
				122.95	



SW-3, 31 DEC 2020 to 28 JAN 2021

SW-3, 31 DEC 2020 to 28 JAN 2021