

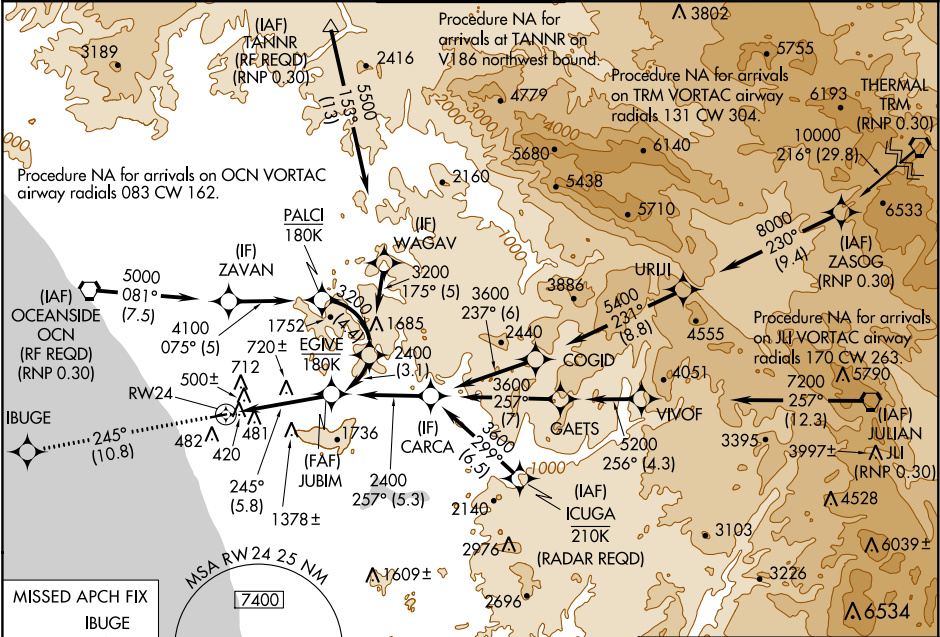
APP CRS	Rwy Idg	4897
245°	TDZE	326
	Apt Elev	331

# RNAV (RNP) Z RWY 24

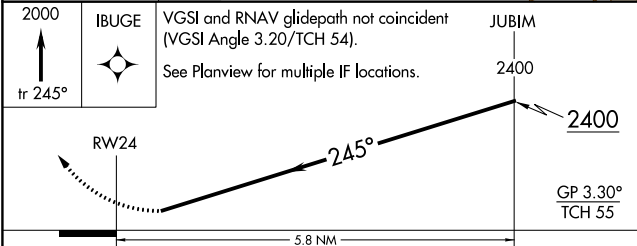
MC CLELLAN-PALOMAR (CRQ)

<p><b>T</b> For uncompensated Baro-VNAV systems, procedure NA below 1°C (34°F) or above 54°C (130°F). For inoperative MALSR, increase RNP 0.10 visibility to RVR 6000 all Cats, RNP 0.30 visibility to 1% all Cats. GPS required.</p>	<p><b>MALSR</b></p>	<p><b>MISSED APPROACH:</b> Climb to 2000 on track 245° to IBUGE and hold.</p>
---	---------------------	---

ATIS <b>120.15</b>	SOCAL APP CON <b>127.3 323.0</b>	<b>PALOMAR TOWER*</b> <b>118.6 (CTAF) 0 276.4</b>	GND CON <b>121.8</b>	CLNC DEL <b>134.85</b>
-----------------------	-------------------------------------	--	-------------------------	---------------------------

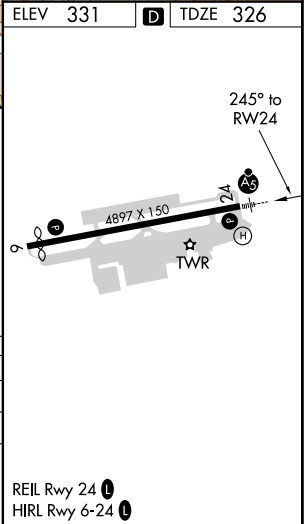


ELEV 331	<b>D</b> TDZE 326
----------	-------------------



CATEGORY	A	B	C	D
RNP 0.10 DA	810/50	484 (500-1)		NA
RNP 0.30 DA	931-1 $\frac{3}{8}$	605 (600-1 $\frac{3}{8}$ )		NA

**AUTHORIZATION REQUIRED**



SW-3, 31 DEC 2020 to 28 JAN 2021

SW-3, 31 DEC 2020 to 28 JAN 2021