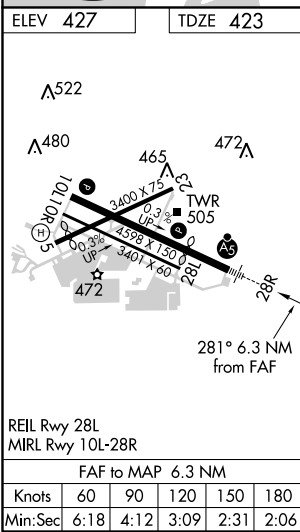
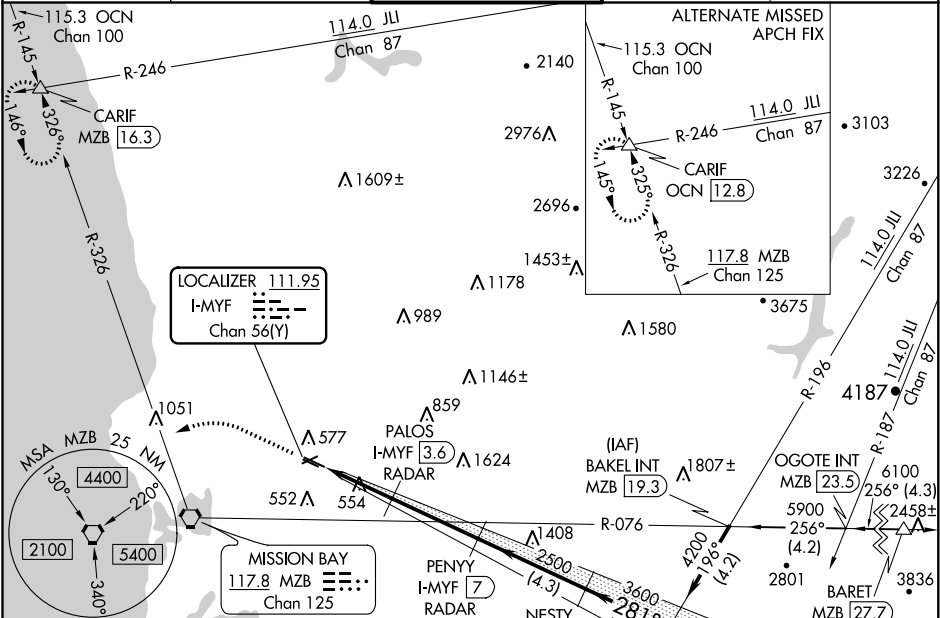


LOC/DME I-MYF 111.95 Chan 56(Y)	APP CRS 281°	Rwy Idg 3399 TDZE 423 Apt Elev 427
---	------------------------	---

ILS or LOC RWY 28R
MONTGOMERY-GIBBS EXECUTIVE (MYF')

DME or RADAR required.	MALSR	MISSED APPROACH: Climb to 1100 then climbing left turn to 3000 on heading 270° and MZB VORTAC R-326 to CARIF INT/MZB 16.3 DME and hold.
Rwy 28R helicopter visibility reduction below ¾ SM NA.		

ATIS 126.9	SOCAL APP CON 124.35 279.625	MONTGOMERY TOWER ★ 119.2 (CTAF) 0 269.4	GND CON 118.225	CLNC DEL 123.725
----------------------	--	---	---------------------------	----------------------------



ELEV 427	TDZE 423
*LOC only	
CATEGORY A	
S-ILS 28R 673-¾ 250 (300-¾)	
S-LOC 28R 820-¾ 397 (400-¾)	
CIRCLING 920-1 493 (500-1)	

SW-3, 31 DEC 2020 to 28 JAN 2021

SW-3, 31 DEC 2020 to 28 JAN 2021