

VOR RAL  
**112.4**

APP CRS  
**264°**

Rwy Idg  
TDZE **636**  
Apt Elev **650**

VOR RWY 26R

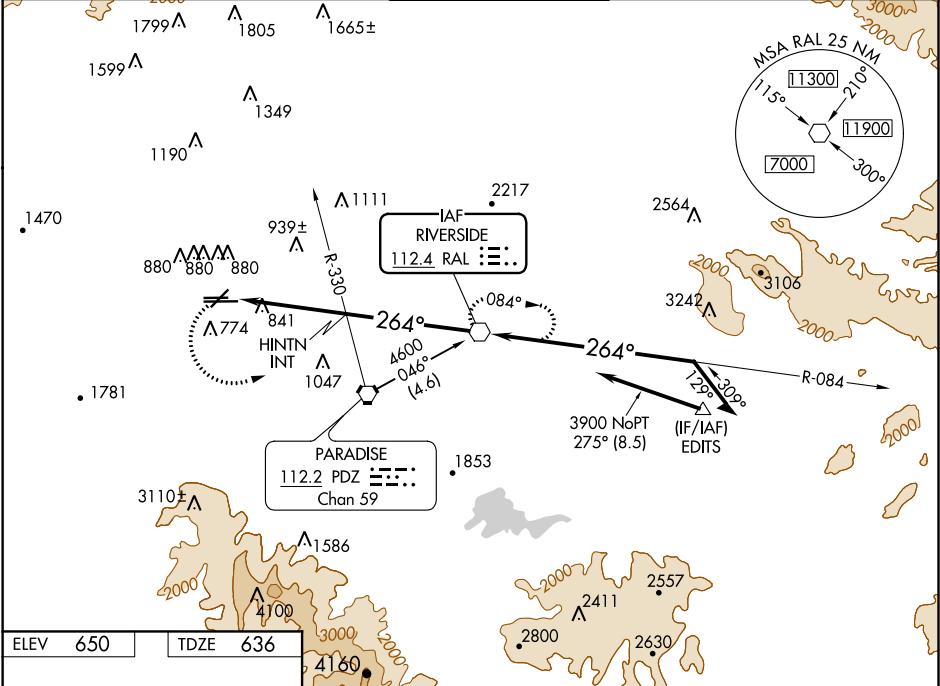
CHINO (CNO)

▼  
NA

Visibility reduction by helicopters NA.  
When local altimeter setting not received, use Riverside Muni  
altimeter setting and increase all MDA 60 feet, increase HINTN  
FIX minimums S-26R and circling Cat B, C, and D visibility ½ mile.

MISSED APPROACH: Climbing left turn  
to 4500 direct RAL VOR and hold,  
continue climb-in-hold to 4500.

ATIS <b>125.85</b>	SOCAL APP CON <b>135.4 318.2</b>	CHINO TOWER ★ <b>118.5 (CTAF)</b>	GND CON <b>121.6</b>	UNICOM <b>122.95</b>
-----------------------	-------------------------------------	--------------------------------------	-------------------------	-------------------------



ELEV 650 TDZE 636

4500 RAL

VGSI and descent angles  
not coincident  
(VGSI Angle 3.00/TCH 53).

RAL VOR

Remain  
within 10 NM

HINTN INT

2140\*

3900

084°

264°

4600

\*2200 when using Riverside  
Muni altimeter setting.

CATEGORY	A	B	C	D
S-26R	2140-1¼ 1504 (1500-1¼)	2140-1½ 1504 (1500-1½)	2140-3	1504 (1500-3)
CIRCLING	2140-1¼ 1490 (1500-1¼)	2140-1½ 1490 (1500-1½)	2140-3	1490 (1500-3)
HINTN FIX MINIMUMS				
S-26R	1320-1	684 (700-1)	1320-2 684 (700-2)	1320-2¼ 684 (700-2¼)
CIRCLING	1320-1	670 (700-1)	1320-2 670 (700-2)	1320-2¼ 670 (700-2¼)

FAF to MAP 9.1 NM

Knots	60	90	120	150	180
Min:Sec	9:06	6:04	4:33	3:38	3:02