

APP CRS
096°

Rwy Idg
TDZE
Apt Elev
N/A
N/A
296

RNAV (GPS)-B
SAN GABRIEL VALLEY (EMT)

RNP APCH.

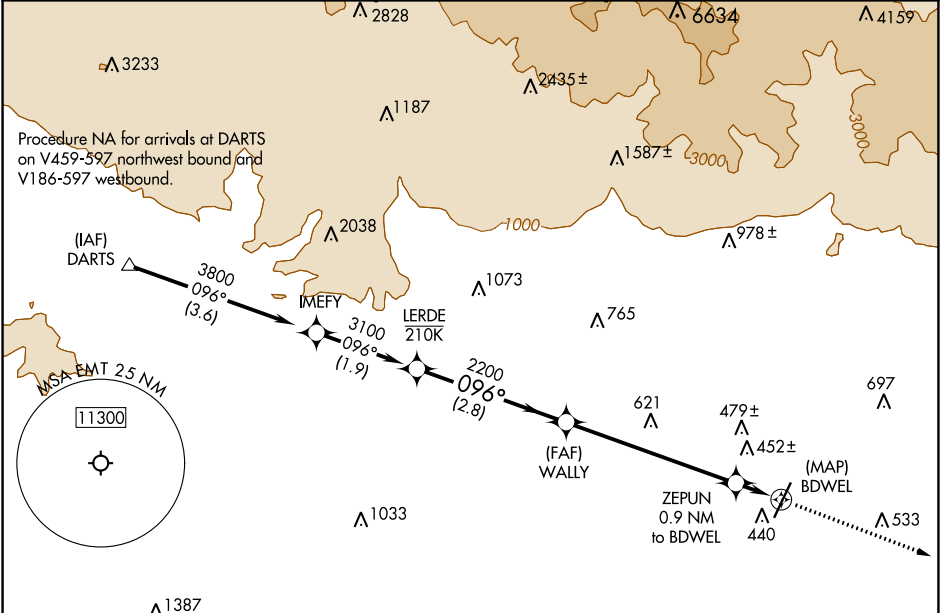
▼

▲ NA

Circling Rwy 1 NA at night.

MISSED APPROACH: Climb to 4000
direct ADAMM and on track 098°
to PDZ VORTAC and hold.

ATIS 118.75	SOCAL APP CON 125.5 318.2	EL MONTE TOWER * 121.2 (CTAF) 0	GND CON 125.9	UNICOM 122.95
-----------------------	-------------------------------------	--	-------------------------	-------------------------



ELEV 296 **D**

096° to BDWEL

3995x75

0.3% Up

313±

354

364

338

1387

MISSED APCH FIX

ADAMM

098° (15.5)

080° (4 NM)

260°

PARADISE PDZ

783

766

1564

LERDE

3100

096°

WALLY

2200

ZEPUN 0.9 NM to BDWEL

BDWEL

1120

2.8 NM

3.2 NM

0.9 NM

CATEGORY	A	B	C	D
CIRCLING	800-1 504 (600-1)	960-1 664 (700-1)	1140-2½ 844 (900-2½)	1140-2¾ 844 (900-2¾)