

APP CRS	Rwy Idg	2712
247°	TDZE	28
	Apt Elev	28

GPS RWY 24

BOB MAXWELL MEMORIAL AIRFIELD (OKB)



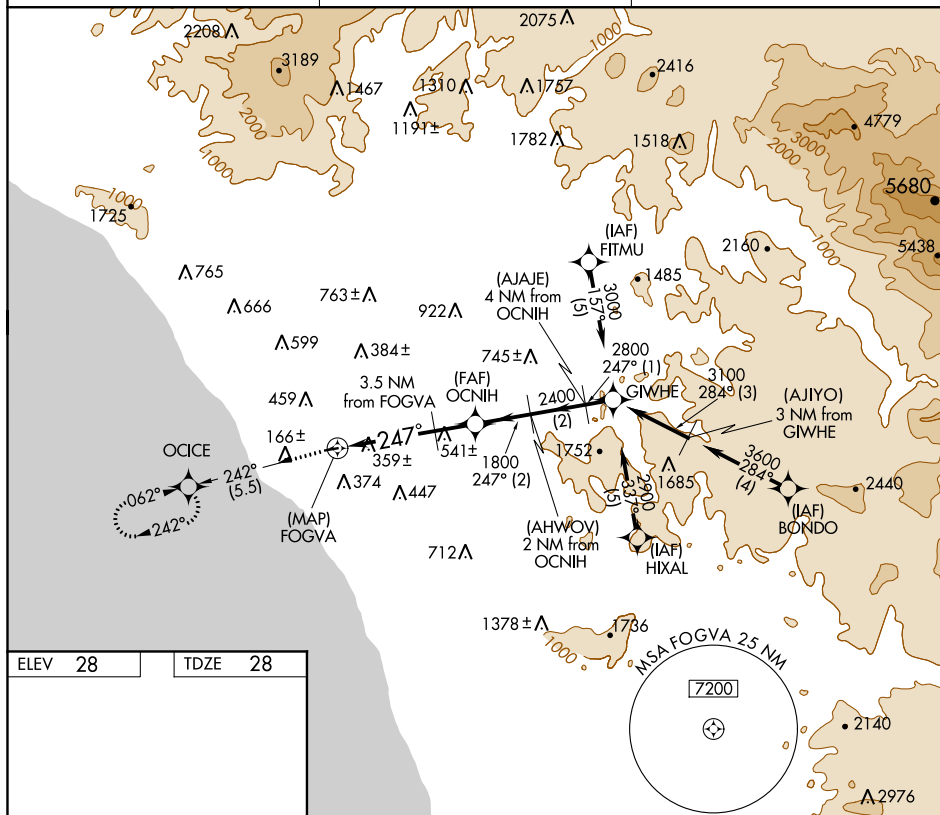
A_{NA} Night Landing: Rwy 6 NA.

MISSED APPROACH: Climb to 2000 via 242° course to OCICE WP and hold.

ASOS
127.8

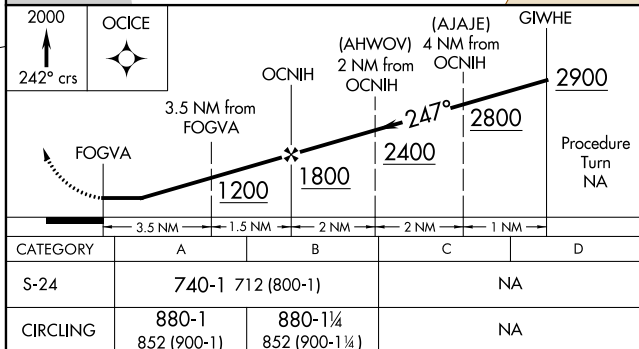
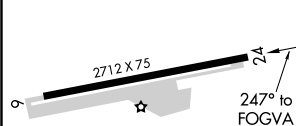
SOCAL APP CON
127.3 323.0

UNICOM
122.725 (CTAF) **L**



ELEV 28

TDZE 28



MIRL Rwy 6-24 **L**
REIL Rwy 24