

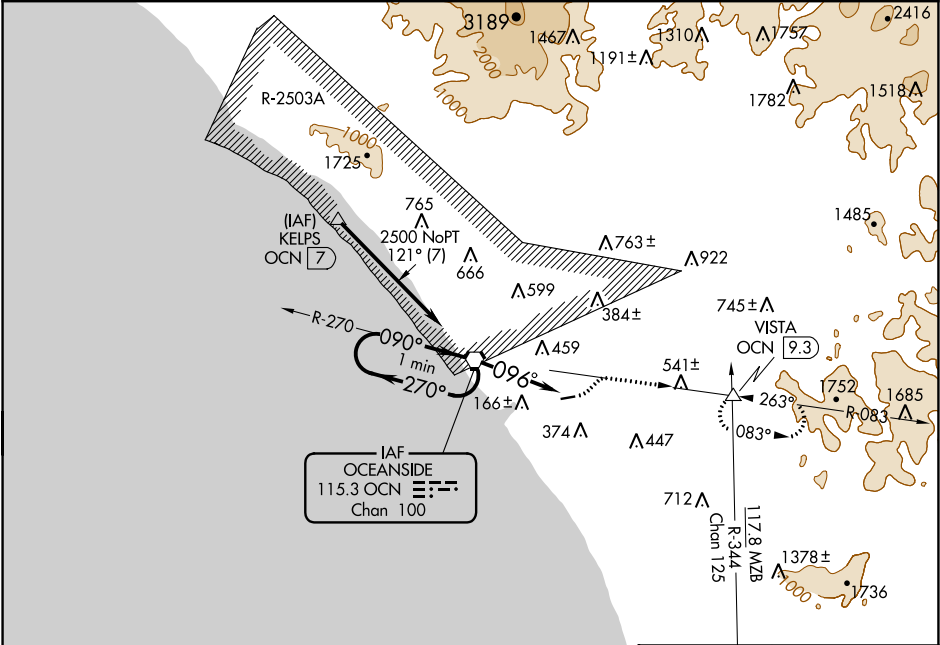
VORTAC OCN	APP CRS	Rwy Idg	N/A
115.3	096°	TDZE	N/A
Chan 100		Apt Elev	28

VOR-A

BOB MAXWELL MEMORIAL AIRFIELD (OKB)

<div><div>▼</div><div>▲</div></div> <div>Helicopter visibility reduction below 1 SM NA. Night Landing: Rwy 6 NA.</div>	MISSED APPROACH: Climbing left turn to 4000 via heading 030° and OCN R-083 to VISTA INT/OCN 9.3 DME and hold.
--	---

ASOS 127.8	SOCAL APP CON 127.3 323.0	UNICOM 122.725 (CTAF) 0
---------------	------------------------------	----------------------------



<div>MSA OCN 25 NM</div> <div>070°</div> <div>1900</div> <div>340°</div>				ELEV 28	
One Minute Holding Pattern		OCN VORTAC		4000 hdg 030°	
2500		OCN R-083		VISTA	
270°		096°		096° 3.4 NM from FAF	
090°		OCN 3.4		2712 X 75	
3.4 NM		MIRL Rwy 6-24 0		REIL Rwy 24	
CATEGORY		A		B	
CIRCLING		1140-1¼		1140-1½	
		1112 (1200-1¼)		1112 (1200-1½)	
		NA		FAF to MAP 3.4 NM	
		Knots		60 90 120 150 180	
		Min:Sec		3:24 2:16 1:42 1:21 1:08	