

APP CRS
264°

Rwy Idg
TDZE
Apt Elev
**N/A
N/A
674**

GPS-A

SANTA YNEZ (IZA)

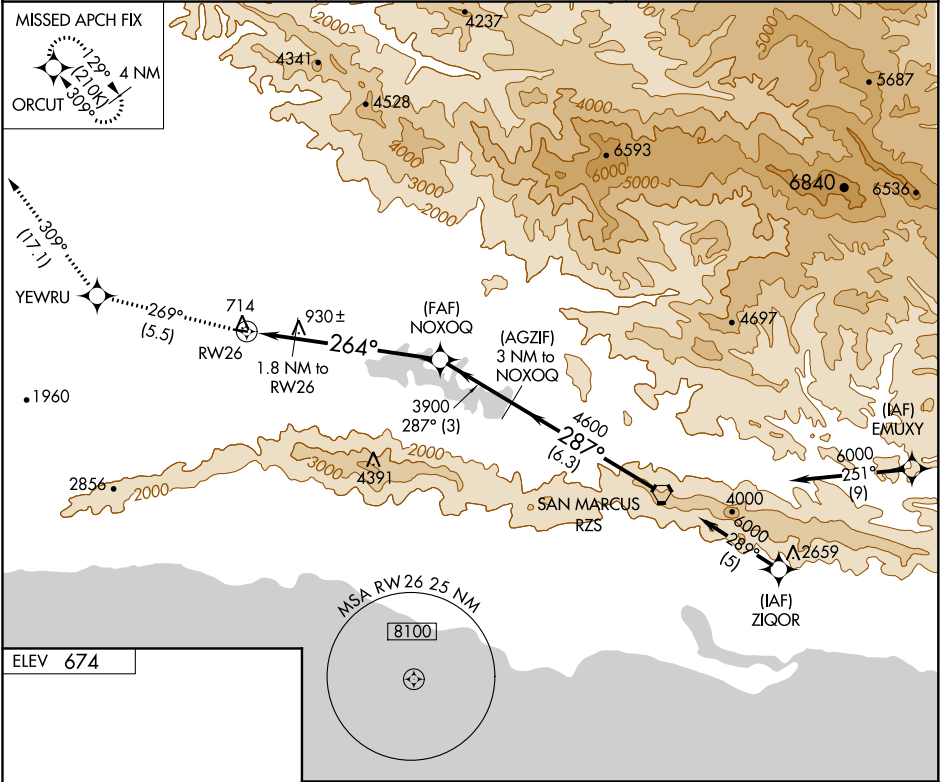
▼

NA

Obtain local altimeter setting on CTAF, when not received, except for operators with approved weather reporting service, use Lompoc altimeter setting.

MISSED APPROACH: Climb to 5000 via 269° course to YEWRU WP, then via 309° course to ORCUT WP and hold.

AWOS-3 118.075	SANTA BARBARA APP CON* 124.15 327.8	UNICOM 122.8 (CTAF) 0
--------------------------	---	---------------------------------



5000

YEWRU

309° crs

ORCUT

269° crs

309° crs

(AGZIF) 3 NM to NOXOQ

RZS VORTAC

NOXOQ

287°

6000

*2360 when using Lompoc altimeter setting.

1.8 NM to RW26

264°

3900

4600

RW26

1840*

1.8 NM

5.2 NM

3 NM

6.3 NM

Procedure Turn NA

CATEGORY	A	B	C	D
CIRCLING	1120-1 446 (500-1)	1160-1 486 (500-1)	NA	
LOMPOC ALTIMETER SETTING MINIMUMS				
CIRCLING	1640-1¼ 966 (1000-1¼)	1680-1½ 1006 (1100-1½)	NA	

REIL Rwy 8 and 26 0
MIRL Rwy 8-26 0