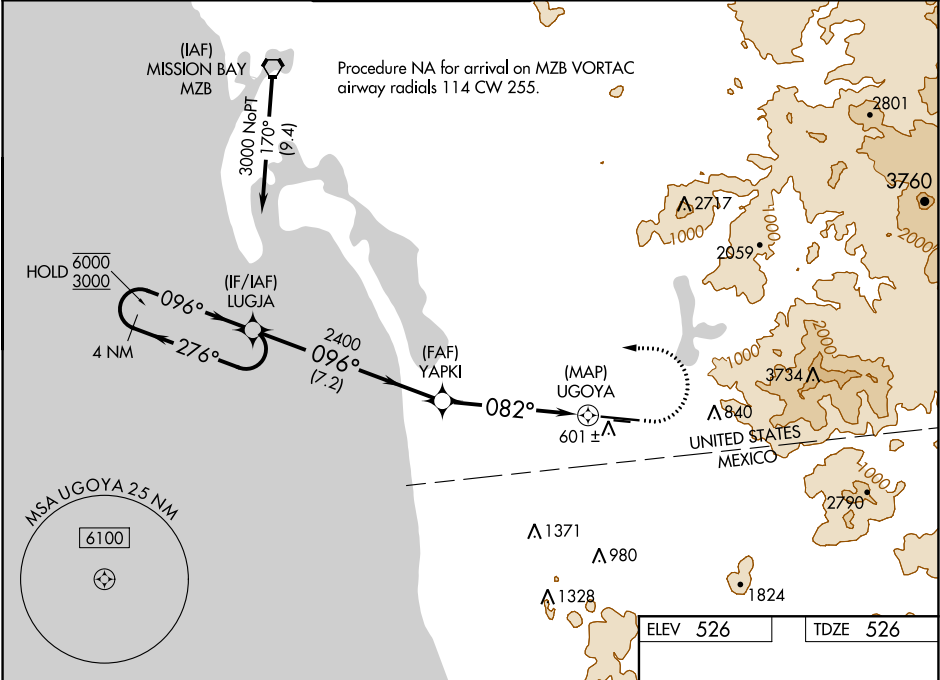


WAAS CH 56534 W08A	APP CRS 082°	Rwy Idg TDZE Apt Elev	7972 526 526
--	------------------------	-----------------------------	---

RNAV (GPS) RWY 8L
BROWN FIELD MUNI (SDM)

RNP APCH.		MISSED APPROACH: (Do not exceed 190K until LUGJA) Climb to 980 then climbing left turn to 3000 direct LUGJA and hold.			
⚠ Circling NA south of Rwy 8R-26L. For uncompensated Baro-VNAV systems, LNAV/VNAV NA below 2°C or above 54°C.					

ATIS 132.35	SOCAL APP CON 124.35 279.625	BROWN TOWER ★ 128.25 (CTAF) 0 225.4	GND CON 124.4	CLNC DEL 124.4	UNICOM 122.95
-----------------------	--	---	-------------------------	--------------------------	-------------------------



4 NM Holding Pattern		LUGJA		YAPKI		UGOYA	
6000 ← 276°		→ 096°		096°		082°	
3000				2400		0.5	
GP 3.00°		7.2 NM		5.2 NM			
TCH 52							
CATEGORY		A	B	C	D		
LPV DA		726-¾ 200 (200-¾)					
LNAV/VNAV DA		776-¾ 250 (300-¾)					
LNAV MDA		860-1 334 (400-1)					
Ⓢ CIRCLING		1020-1 494 (500-1)		1200-2 674 (700-2)		2260-3 1734 (1800-3)	

ELEV 526	TDZE 526
----------	----------

REIL Rwy 26R
REIL Rwy 8L
MIRL Rwy 8R-26L
HIRL Rwy 8L-26R

SW-3, 31 DEC 2020 to 28 JAN 2021

SW-3, 31 DEC 2020 to 28 JAN 2021