

WAAS CH 63102 W18A	APP CRS 180°	Rwy Idg 6498 TDZE 3062 Apt Elev 3062
--	------------------------	---

RNAV (GPS) RWY 18

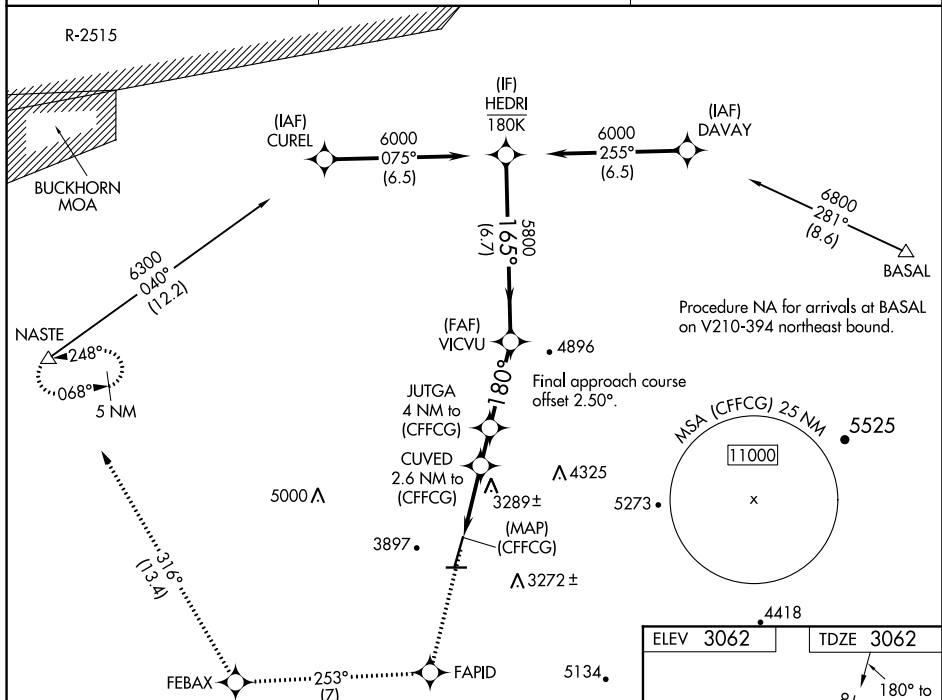
APPLE VALLEY (APV)

RNP APCH.

T Circling NA to Rwy 8 and 26. Circling to Rwy 36 NA at night.
A NA Rwy 18 helicopter visibility reduction below $\frac{3}{4}$ SM NA. Use Victorville altimeter setting; if not received, procedure NA.

MISSED APPROACH: Climb to 6000 direct FAPID and track 253° to FEBAX and track 316° to NASTE and hold.

VCV AWOS-3 135,475	JOSHUA APP CON 124,55 363.0	AUN COM 122.8 (CTAF) 0
------------------------------	---------------------------------------	----------------------------------



CATEGORY		A		B		C		D	
LPV	DA	3380-7 $\frac{1}{2}$				318 (400-7 $\frac{1}{2}$)			
RNAV	MDA	3600-1 538 (600-1)				3600-1 $\frac{1}{2}$ 538 (600-1 $\frac{1}{2}$)			
C CIRCLING		4220-1 $\frac{1}{4}$ 1158 (1200-1 $\frac{1}{4}$)		4440-1 $\frac{1}{2}$ 1378 (1400-1 $\frac{1}{2}$)		4740-3 1678 (1700-3)			

