

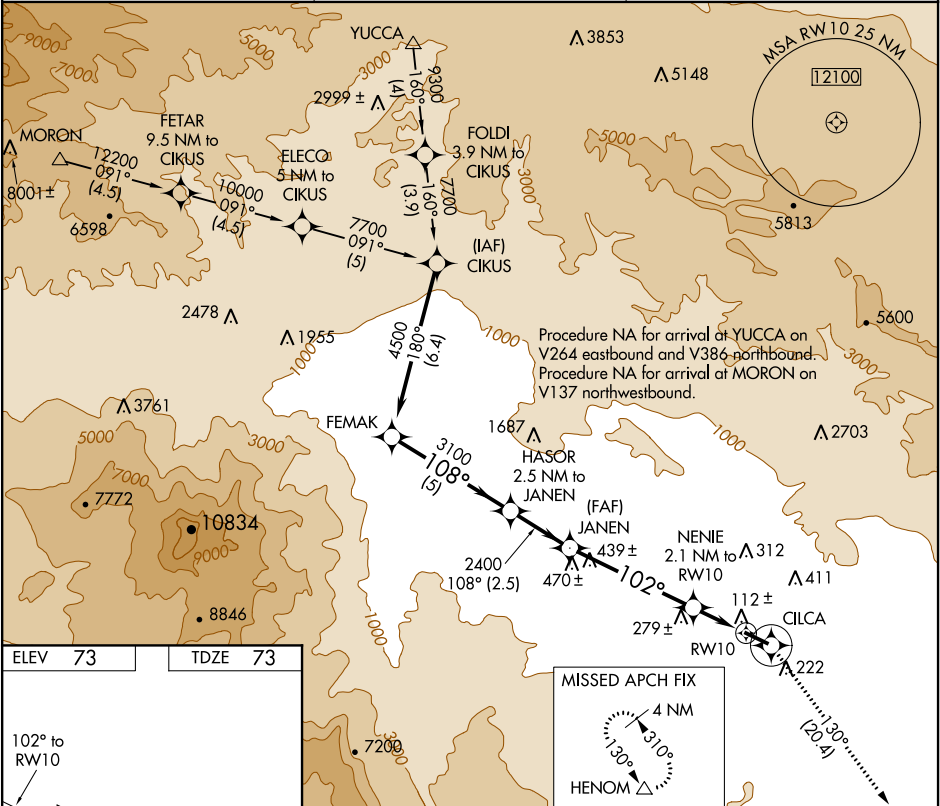
APP CRS	Rwy Idg	5002
102°	TDZE	73
	Apt Elev	73

RNAV (GPS) RWY 10

BERMUDA DUNES (UDD)

<div><div>NA</div><div>GPS or RNP-0.3 required. DME/DME RNP-0.3 NA. Use Jacqueline Cochran Rgnl altimeter setting.</div></div>	<div>MISSED APPROACH: Climb to 3700 direct CILCA and via 130° track to HENOM and hold.</div>
--	--

TRM ASOS 118.325	SOCAL APP CON* 135.275 251.1	UNICOM 122.8 (CTAF) 0
---------------------	---------------------------------	--------------------------



FEMAK	HASOR 2.5 NM to JANEN	JANEN	<div>3700</div> <div>CILCA</div> <div>130° tr</div>	HENOM △
<div>4500</div> <div>Procedure Turn NA</div>	<div>108°</div> <div>3100</div> <div>2400</div> <div>102°</div> <div>800</div>	<div>3.08°</div> <div>TCH 40</div> <div>2.1 NM to RW10</div> <div>RW10</div>		
<div>5 NM</div> <div>2.5 NM</div> <div>4.9 NM</div> <div>2.1 NM</div>				
CATEGORY	A	B	C	D
LNAV MDA	480-1 407 (500-1)		480-1¼ 407 (500-1¼)	NA
CIRCLING	700-1 627 (700-1)		700-1¾ 627 (700-1¾)	NA

REIL Rwy 28

LURL Rwy 10-28