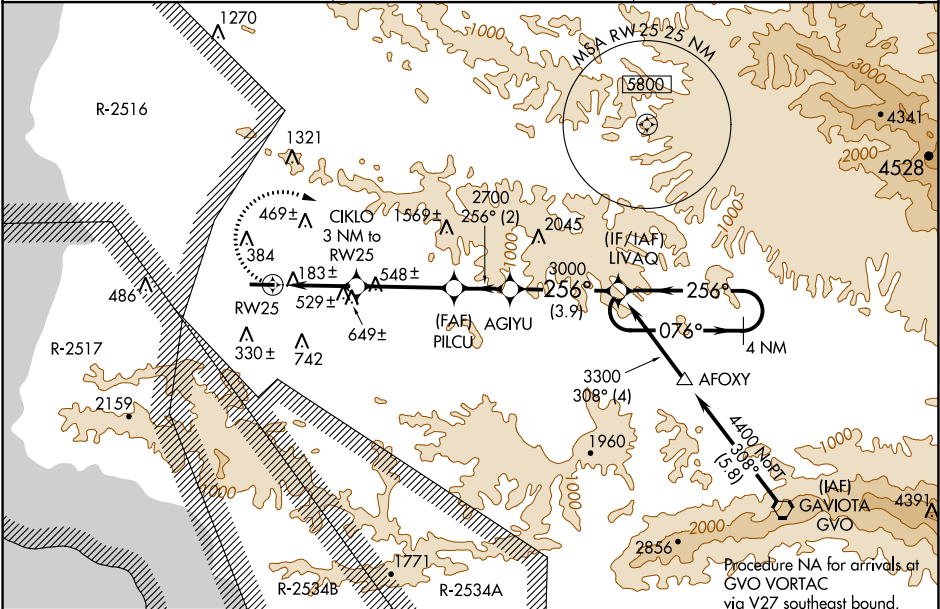


APP CRS	Rwy Idg	4600
256°	TDZE	88
	Apt Elev	88

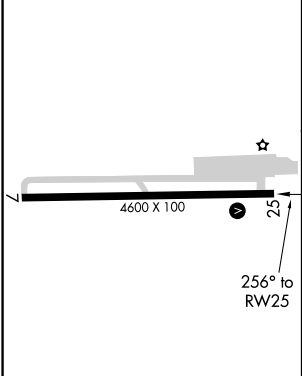
RNAV (GPS) RWY 25  
LOMPOC (LPC)



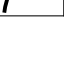
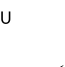
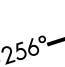
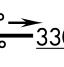
<p><b>⚠</b> DME/DME RNP-0.3 NA. When local altimeter setting not received, use Santa Maria Public/Captain G Allan Hancock Field altimeter setting and increase all MDA 60 feet, and increase visibility LNAV and Circling Cat B ¼ mile.</p>	<p><b>MISSED APPROACH:</b> Climbing right turn to 3300 direct LIVAQ and hold.</p>
---	---

AWOS-3PT 133.875	SANTA BARBARA APP CON★ 124.15 327.8	UNICOM 122.7 (CTAF) <b>0</b>
---------------------	--	---------------------------------



ELEV 88	TDZE 88
---------	---------



		VGSI and descent angle not coincident (VGSI Angle 3.25/TCH 26).		4 NM Holding Pattern	
		CIKLO 3 NM to RW25	PILCU	AGIYU	LIVAQ
		$\leq 3.74^\circ$ TCH 40			
		1320	2700	3000	076° → ← 256° 3300
		3 NM	3.5 NM	2 NM	3.9 NM
CATEGORY	A	B	C	D	
LNAV MDA	1000-1¼	912 (1000-1¼)		NA	
CIRCLING	1000-1¼	912 (1000-1¼)		NA	

REIL Rwy 25 **0**  
MIRL Rwy 7-25 **0**