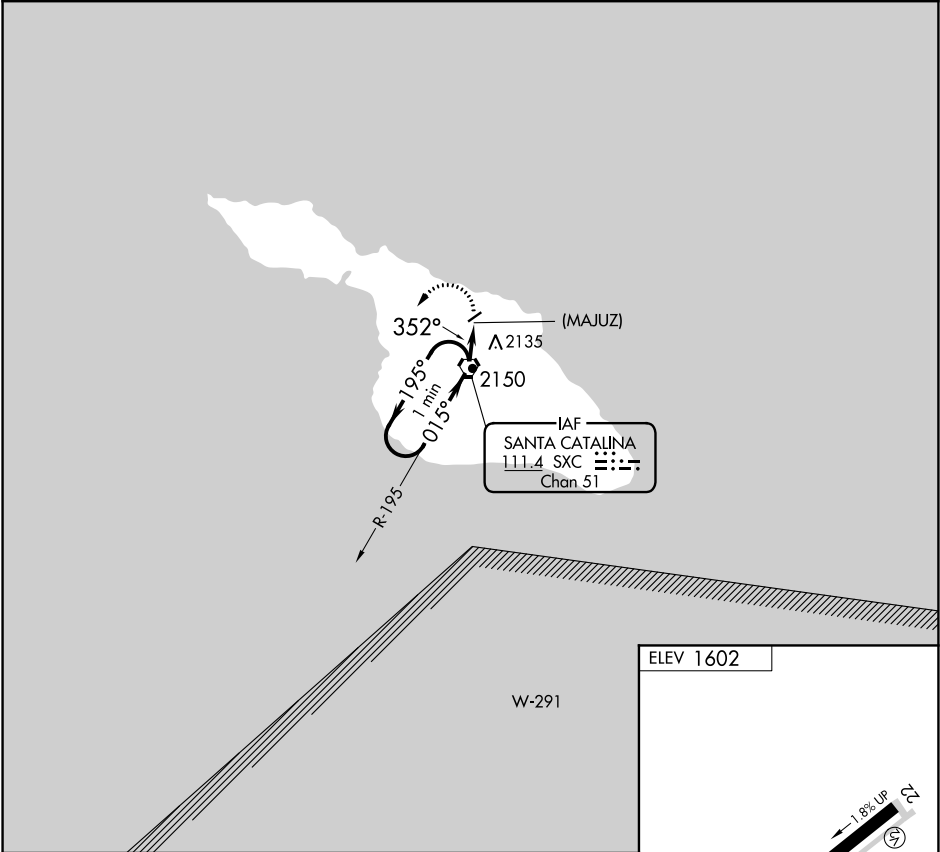





VORTAC SXC 111.4 Chan 51	APP CRS 352°	Rwy Idg TDZE Apt Elev N/A N/A 1602
--	------------------------	--

VOR or GPS-A
CATALINA (AVX)

<div><div>▼</div><div>▲ NA</div></div>	MISSED APPROACH: Climbing left turn to 3400 in SXC VORTAC holding pattern.
--	--

ASOS 120.675	SOCAL APP CON 127.4 323.275	UNICOM 122.7 (CTAF)
------------------------	---------------------------------------	-------------------------------



<div>One Minute Holding Pattern</div> <div><div>3400 ← 195°</div><div>015° →</div><div>015°</div><div>3100</div><div>352°</div><div>1.6 NM</div></div> <div><div>SXC VORTAC</div><div>(MAJUJ) SXC 1.6</div></div>			<div><div>3400</div><div></div></div> <div><div>SXC</div><div></div></div>	<div><div></div><div><div>352° 1.6 NM</div><div>from FAF</div></div><div><div>REIL Rwy 22</div><div>MIRL Rwy 4-22</div></div></div>						
CATEGORY	A	B	C	D	FAF to MAP 1.6 NM					
CIRCLING	2580-1¼ 978 (1000-1¼)	2580-1½ 978 (1000-1½)	NA		Knots	60	90	120	150	180
					Min:Sec	1:36	1:04	0:48	0:38	0:32

SW-3, 31 DEC 2020 to 28 JAN 2021

SW-3, 31 DEC 2020 to 28 JAN 2021