

VORTAC TNP	APP CRS	Rwy Idg	5531
114.2	264°	TDZE	1835
Chan 89		Apt Elev	1888

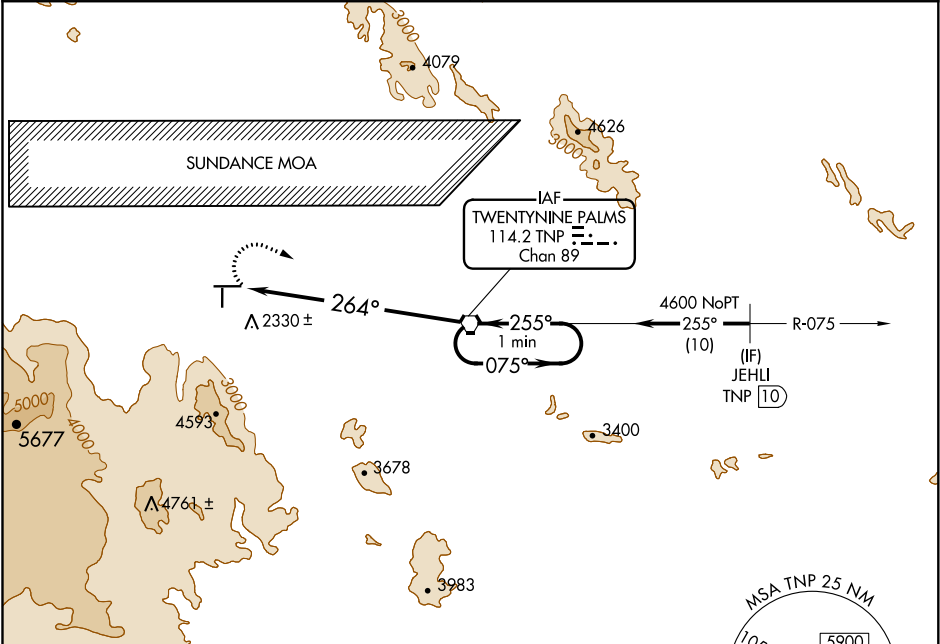
VOR RWY 26
TWENTYNINE PALMS (TNP)

NA

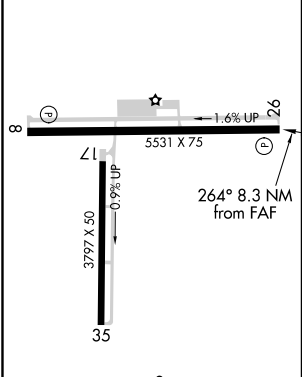
When Palm Springs Intl altimeter setting not received, procedure NA. Circling NA south of Rwy 8-26. Use Palm Springs Intl altimeter setting.

MISSED APPROACH: Climbing right turn to 5900 direct TNP VORTAC and hold, continue climb-in-hold to 5900.

LOS ANGELES CENTER 128.15 285.6	AUNICOM 122.8 (CTAF) 0
------------------------------------	---------------------------



ELEV 1888	TDZE 1835
-----------	-----------



REIL Rws 8 and 26 0					
MIRL Rws 8-26 and 17-35 0					
FAF to MAP 8.3 NM					
Knots	60	90	120	150	180
Min:Sec	8:18	5:32	4:09	3:19	2:46

	5900	TNP	TNP VORTAC	One Minute Holding Pattern
				075° → 4900
				← 255°
				264°
				4600
				3.13°
				TCH 40
				8.3 NM
CATEGORY	A	B	C	D
S-26	3580-1¼ 1745 (1700-1¼)	3580-1½ 1745 (1700-1½)	NA	NA
CIRCLING	3580-1¼ 1692 (1700-1¼)	3580-1½ 1692 (1700-1½)	NA	NA