

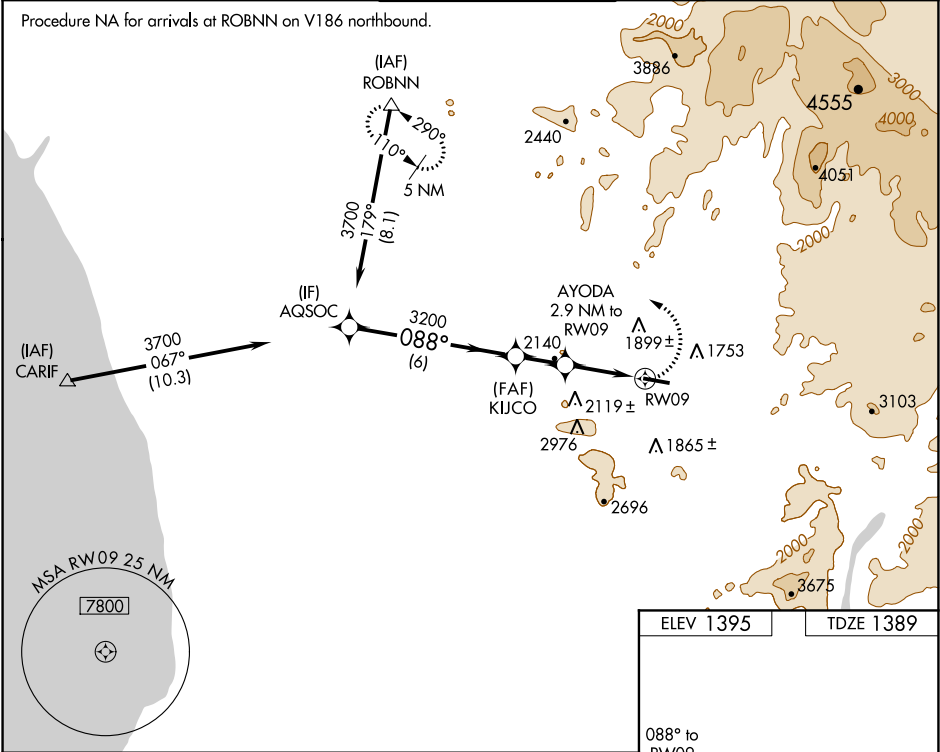
APP CRS	Rwy Idg	5001
088°	TDZE	1389
	Apt Elev	1395

RNAV (GPS) RWY 9
RAMONA (RNM)

⚠ Circling NA north of Rwy 9-27. DME/DME RNP -0.3 NA. LNAV minima NA when using Gillespie Field altimeter setting. When local altimeter setting not received, use Gillespie Field altimeter setting and increase all Circling MDA 180 feet and increase Circling visibility Cats A and B ¼ mile and Cat C ½ mile. Helicopter visibility reduction below ¾ SM NA.

MISSED APPROACH: Climbing left turn to 5000 direct ROBNN and hold.

ATIS 132.025	SOCAL APP CON 132.2 269.1	RAMONA TOWER ★ 119.875 (CTAF) 0	GND CON 121.65	UNICOM 122.95
-----------------	------------------------------	------------------------------------	-------------------	------------------



* 2700 when using Gillespie Field altimeter setting.

	AQSOC	KIJCO	AYODA	RW09	ROBNN
	3700	3200	2140	2119±	3700
	088°	088°	088°	088°	088°
	6 NM	1.8 NM	0.7 NM	2.2 NM	
Procedure Turn NA					
CATEGORY	A	B	C	D	
LNAV MDA	2240-1 851 (900-1)	2240-1¼ 851 (900-1¼)	2240-2½ 851 (900-2½)	NA	
CIRCLING	2240-1 845 (900-1)	2240-1¼ 845 (900-1¼)	2240-2½ 845 (900-2½)	NA	

ELEV 1395 TDZE 1389

088° to RW09

TWR 1437

5001 X 150

REIL Rwy 27 0

MIRL Rwy 9-27 0

SW-3, 31 DEC 2020 to 28 JAN 2021

SW-3, 31 DEC 2020 to 28 JAN 2021