

APP CRS  
272°

Rwy Idg  
4006

TDZE  
-135

Apt Elev  
-129

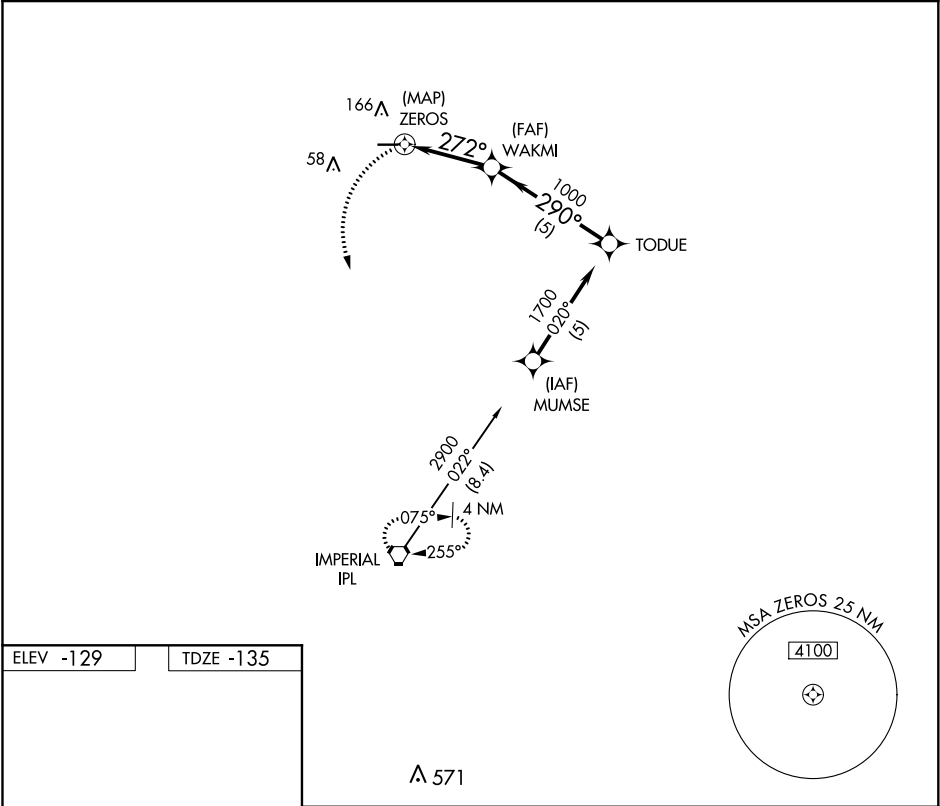
RNAV (GPS) RWY 26  
BRAWLEY MUNI (BWC)

NA

GPS or RNP-0.3 required. DME/DME RNP-0.3 NA.  
Use Imperial County altimeter setting.  
Circling Rwy 8 NA at night.

MISSED APPROACH: Climbing left turn to 3600 direct  
IPL VORTAC and hold.

IPL ASOS 132.175	LOS ANGELES CENTER 128.6 291.7	CTAF 122.9
---------------------	-----------------------------------	---------------



ELEV -129

TDZE -135

REIL Rwy 8 and 26

MRL Rwy 8-26

3600

IPL

WAKMI

TODUE

ZEROS

1000

1700

272°

290°

272°

290°

0.3

3.2 NM

5 NM

Procedure Turn NA

CATEGORY	A	B	C	D
LNAV MDA	360-1	495 (500-1)	360-1 1/4 495 (500-1 1/4)	NA
CIRCLING	560-1	689 (700-1)	560-2 689 (700-2)	NA