

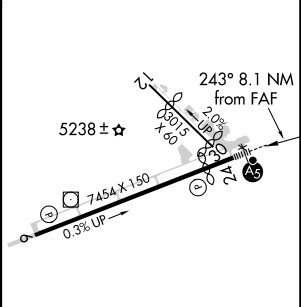
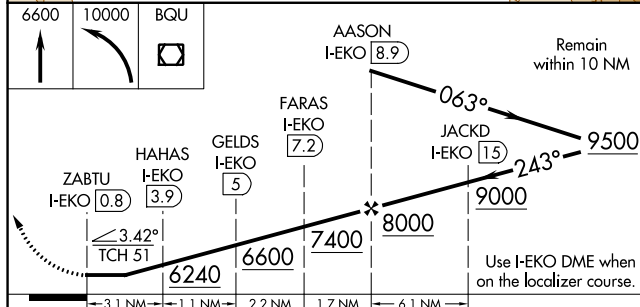
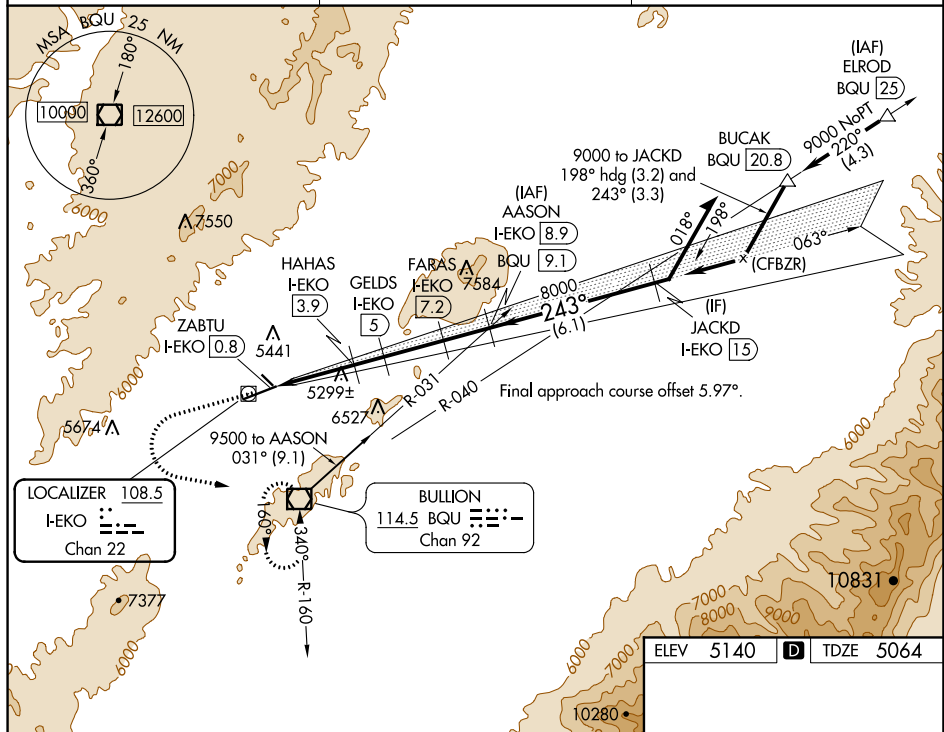
19171


LDA/DME RWY 24  
ELKO RGNL (EKO)

MALSR

**MISSED APPROACH:** Climb to 6600 then climbing left turn to 10000 direct BQU VOR/DME and hold, continue climb-in-hold to 10000.

ASOS <b>119.275</b>	SALT LAKE CENTER <b>132.25 338.35</b>	UNICOM <b>123.0 (CTAF) 0</b>
------------------------	--	---------------------------------



CATEGORY	A	B	C	D
S-24	5800-1	736 (700-1)	5800-1½	736 (700-1½)
 CIRCLING	5920-1 780 (800-1)	6100-1½ 960 (1000-1½)	6620-3 1480 (1500-3)	6980-3 1840 (1900-3)

MIRL Rwy 6-24 **L**

ELKO RGNL (EKO)  
LDA/DME RWY 24

SW-4, 31 DEC 2020 to 28 JAN 2021