

FALLON, NEVADA

RNAV (GPS) RWY 13R

APCH CRS	Rwy Idg	14,001
131°	TDZE	3935
	Arprt Elev	3935

AL-143 (USN)

FALLON NAS (VAN VOORHIS FLD) (KNFL)

† MISSED APPROACH: Climb to 9800 direct HOROD and hold. Continue climb-in-hold. Max 175 KIAS until 9800. Missed apch requires minimum climb of 270 ft/nm to 9800.

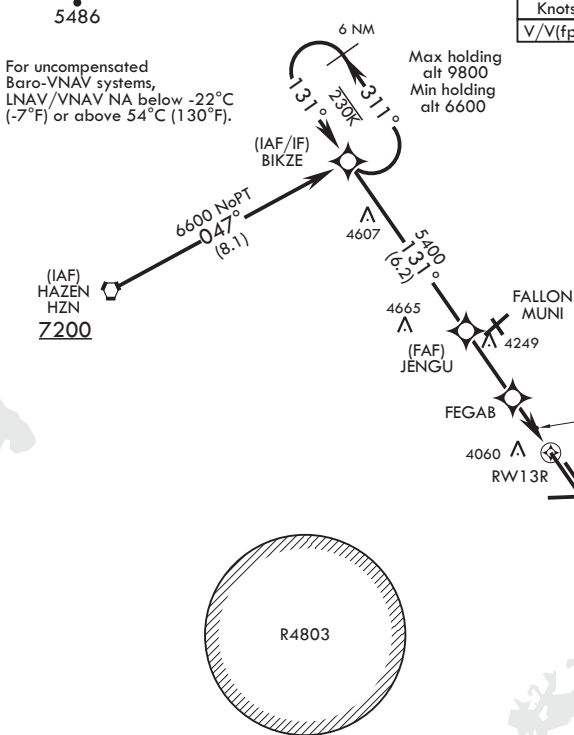
ATIS★	NAVY FALLON APP CON/DEP CON	NAVY FALLON TOWER★	GND CON	CLNC DEL	ASR/PAR
370.925	120.85 360.2	119.25 340.2	251.15	353.55	

DME/DME RNP-0.3 NA

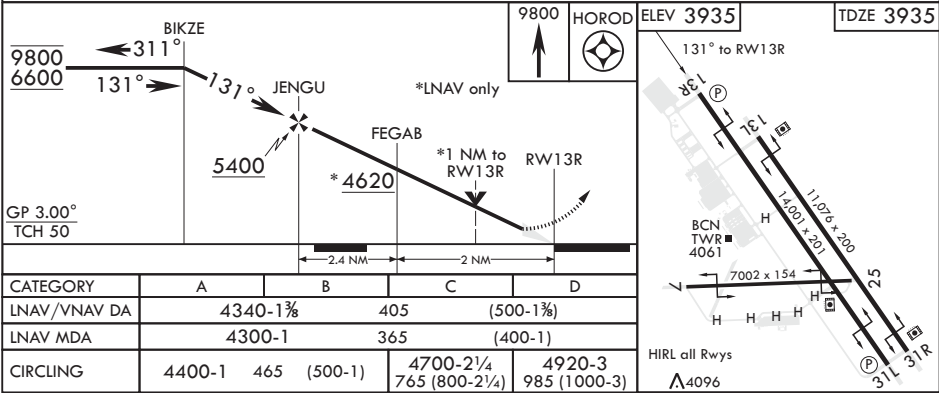
† CAUTION: Missed Approach
Minimum Climb Rate to 5100

Knots	60	120	180	240	300	360
V/V(fpm)	270	540	810	1080	1350	1620

Controlling Obstacle 4662



EMERG SAFE ALT 100 NM 15,600



FALLON, NEVADA

39°25'N - 118°42'W

FALLON NAS (VAN VOORHIS FLD) (KNFL)

Amdt 3 03JAN19

RNAV (GPS) RWY 13R

SW-4, 31 DEC 2020 to 28 JAN 2021

SW-4, 31 DEC 2020 to 28 JAN 2021