

LOC Y RWY 21L

LOC I-DIQ 109.1	APCH CRS 209°	Rwy ldg 21L 10,051 TDZE 1865 Arpt Elev 1869	Rwy ldg 21R 10,120 TDZE 1869
---------------------------	-------------------------	--	---

AL-227 [USAF]

NELLIS AFB (KLSV)

* When ALS inop, increase CAT CDE vis to 13/8 miles.
** Circling not authorized E of Rwy 3R-21L.

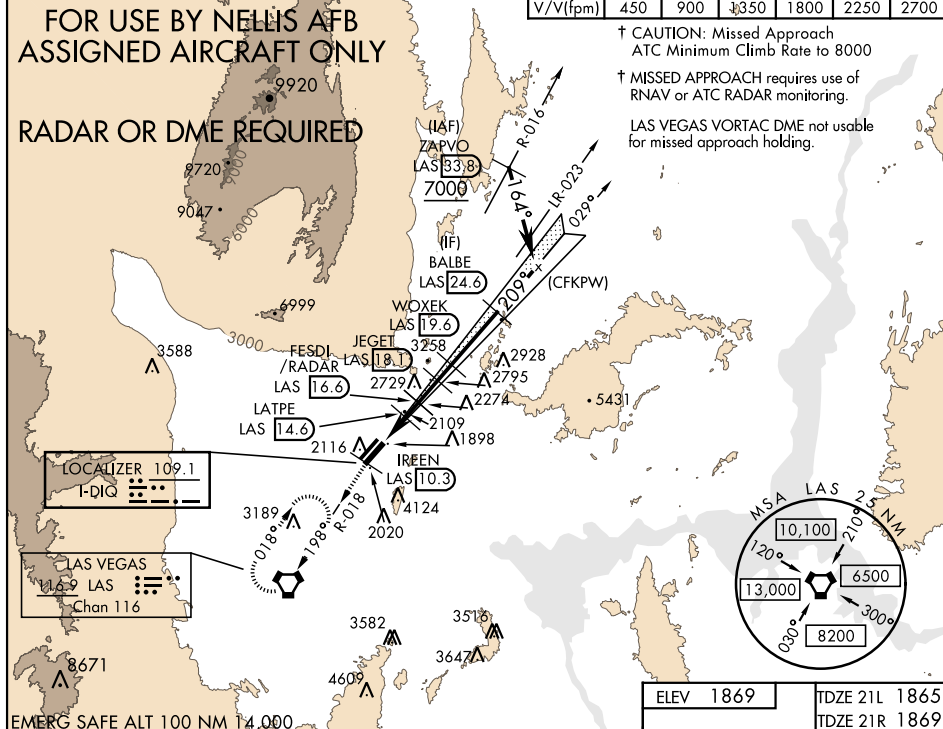


† MISSED APPROACH: Climb to 8000, intercept the LAS VORTAC R-018 to 10.3 DME (IREEN), then to LAS and hold.

ATIS 270.1	NELLIS APP CON 124.95 273.55	NELLIS TOWER 132.55 327.0	GND CON 121.8 275.8	CLNC DEL 120.9 289.4
		Knots 60 120 180 240 300 360		
		V/V(fpm) 450 900 1350 1800 2250 2700		

FOR USE BY NELLIS AFB
ASSIGNED AIRCRAFT ONLY

RADAR OR DME REQUIRED

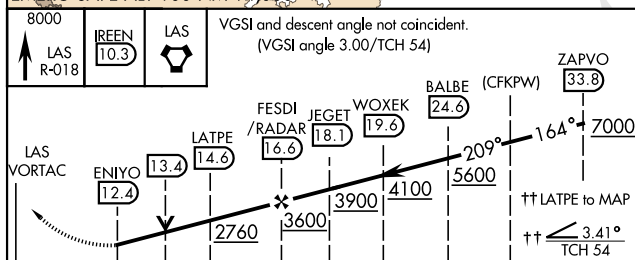


† CAUTION: Missed Approach
ATC Minimum Climb Rate to 8000

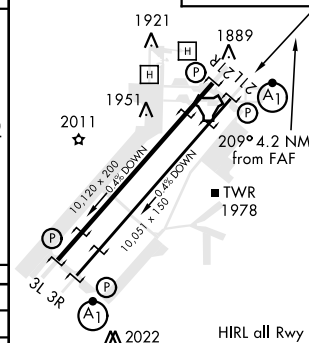
† MISSED APPROACH requires use of RNAV or ATC RADAR monitoring.

LAS VEGAS VORTAC DME not usable
for missed approach holding.

EMERG SAFE ALT 100 NM 14 000

[illegible]

ELEV 1869	TDZE 21L 1865
	TDZE 21R 1869



FAF to MAP 4.2 NM					
Knots	60	90	120	150	180
Min:Sec	4:12	2:48	2:06	1:41	1:24

LAS VEGAS, NEVADA

36°14'N-115°02'W

NELLIS AFB (KLSV)

LOC Y RWY 21L

Amdt 7 03JAN19

SW-4, 31 DEC 2020 to 28 JAN 2021