

APP CRS
165°

Rwy Idg
TDZE
Apt Elev

5004
5033
5039

MILFORD MUNI/BEN AND JUDY BRISCOE FIELD (MLF)

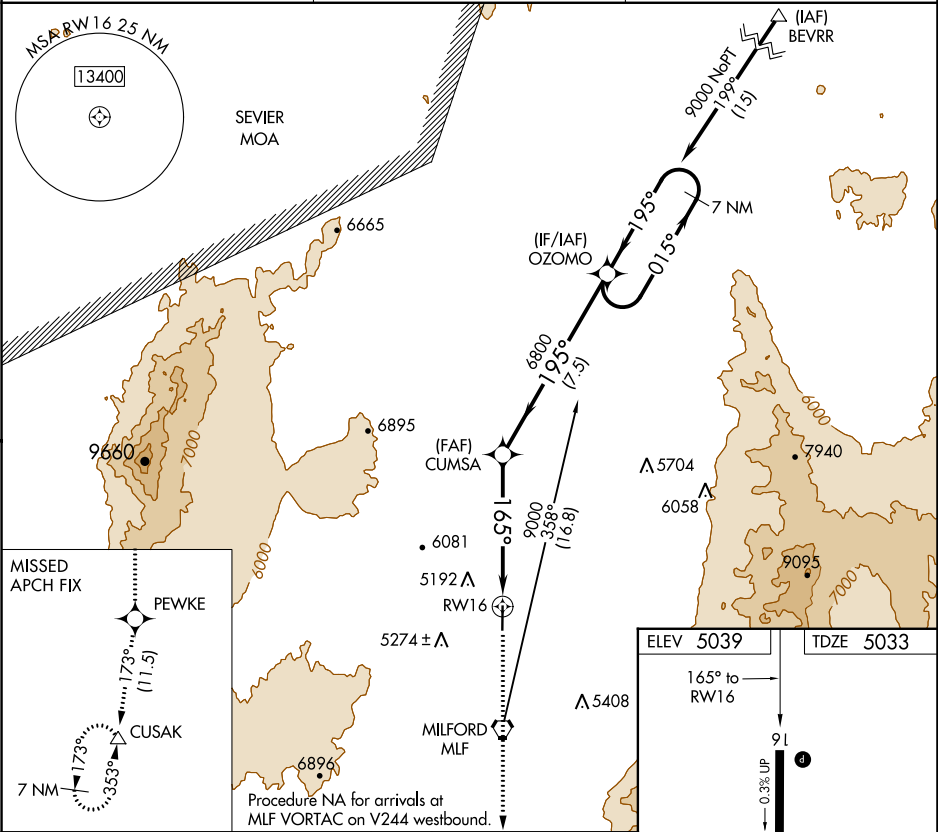
RNAV (GPS) RWY 16

RNP APCH.

When local altimeter setting not received, use Cedar City altimeter setting and increase all MDA 200 feet and increase LNAV Cat C/D visibility ½ mile.

MISSED APPROACH: Climb to 10000 direct PEWKE and on track 173° to CUSAK and hold.

ASOS 135.025	SALT LAKE CENTER 125.575 379.275	UNICOM 122.8 (CTAF)
------------------------	--	-------------------------------



7 NM Holding Pattern

OZOMO

10000

PEWKE

tr 173°

CUSAK

9000

015°

195°

195°

6800

165°

3.00°

TCH 40

RW16

7.5 NM

5.5 NM

CATEGORY	A	B	C	D
LNAV MDA	5480-1	447 (500-1)	5480-1 3/8	447 (500-1 3/8)

MILF Rwy 16-34

REIL Rwy 16 and 34