

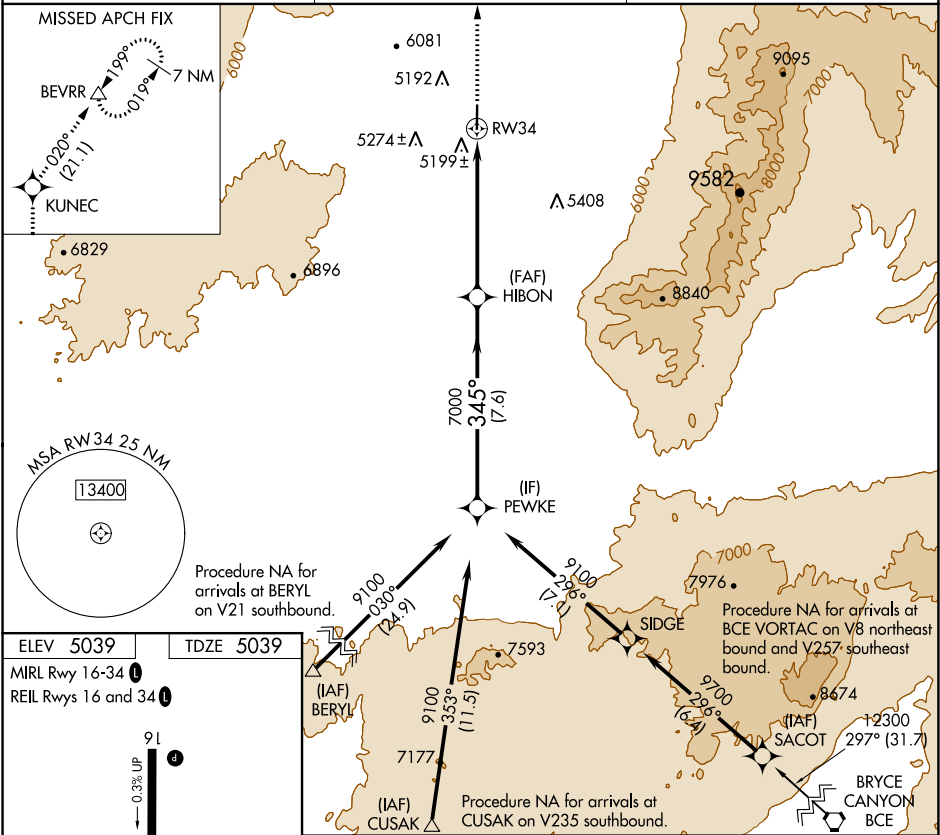
APP CRS	Rwy Idg	5004
345°	TDZE	5039
	Apt Elev	5039

RNAV (GPS) RWY 34

MILFORD MUNI/BEN AND JUDY BRISCOE FIELD (MLF)

RNP APCH.	MISSED APPROACH: Climb to 11000 direct KUNEC and on track 020° to BEVRR and hold, continue climb-in-hold to 11000.
▼ When local altimeter setting not received, use Cedar City altimeter setting and increase all MDA 180 feet; increase LNAV Cat C/D visibility ½ mile.	

ASOS 135.025	SALT LAKE CENTER 125.575 379.275	UNICOM 122.8 (CTAF) 0
-----------------	-------------------------------------	--------------------------



ELEV 5039	TDZE 5039
MIRL Rwy 16-34 1	REIL Rwy 16 and 34 1
91	500 x 75
34	345° to RW34
11000	KUNEC
tr 020°	BEVRR
HIBON	PEWKE
RW34	9100
7000	345°
3.00°	TCH 42
6 NM	7.6 NM
CATEGORY	A B C D
LNAV MDA	5460-1 421 (500-1) 5460-1¼ 421 (500-1¼)

RNAV (GPS) RWY 34

SW-4, 31 DEC 2020 to 28 JAN 2021

SW-4, 31 DEC 2020 to 28 JAN 2021