

HI-TACAN RWY 32

TACAN HIF Chan 49	APCH CRS 332°	Rwy ldg TDZE Arpt Elev 13,500 4783 4789
----------------------	------------------	--

JAL-296 (USAF)

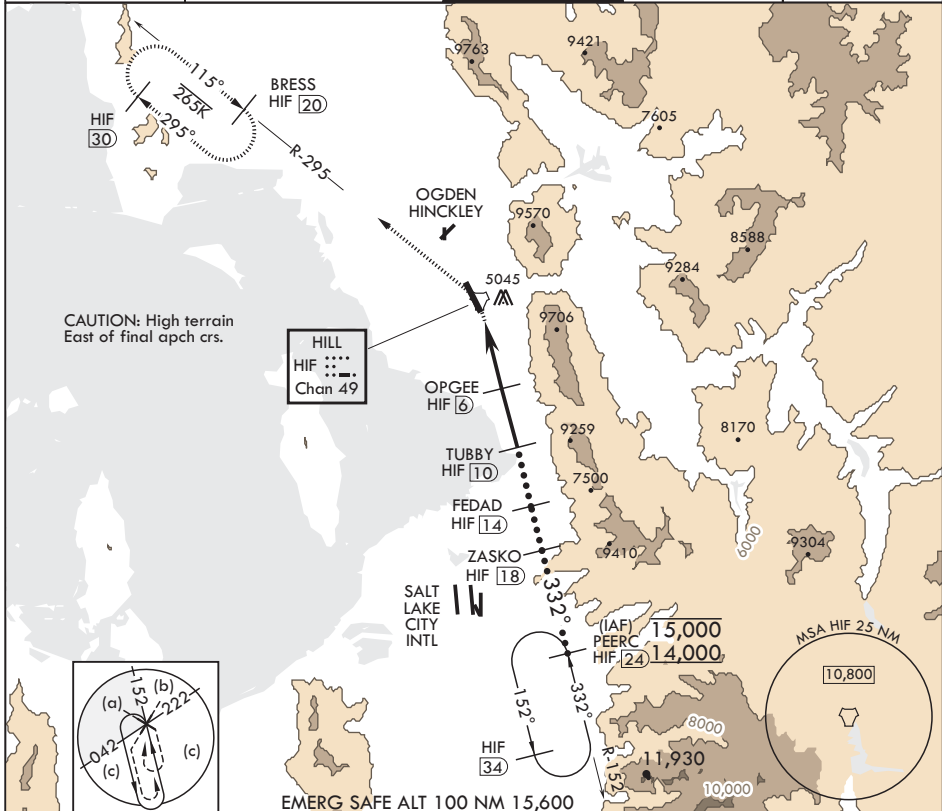
HILL AFB (KHIF)

* Circling not authorized E of Rwy 14-32.

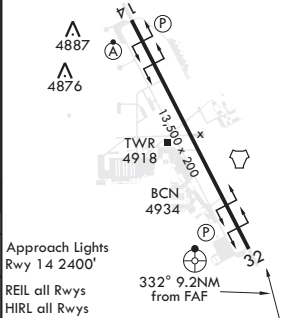


MISSED APPROACH: Climbing left turn to 8400 out HIF TACAN R-295 to BRESS and hold.

ATIS 134.925 397.9	SALT LAKE CITY APP CON 121.1 319.25	TOWER 127.15 263.15	GND CON 121.6 275.8	CLNC DEL 124.1 335.8
-----------------------	--	------------------------	------------------------	-------------------------



8400 HIF R-295	BRESS HIF 20	VGSI and descent angle not coincident.	ZASKO 18	PEERC R-152 24	ELEV 4789	TDZE 4783
TACAN	FIKAP 1.4	OPGEE 6	TUBBY 10	FEDAD 14	9500	15,000 14,000
6800	8400	9500	10,000	15,000	14,000	
≤ 3.64° TCH 52						
6	4.6 NM	4 NM				
CATEGORY	C	D	E			
S-32	5240/50 457 (500-1)	5240/60 457 (500-1 1/4)	551 (600-2)			
CIRCLING*	5240-1 1/2 451 (500-1 1/2)	5340-2	551			
OGDEN, UTAH	41°07'N - 111°58'W	HILL AFB (KHIF)				
Amtr 4 05MAR15						



HI-TACAN RWY 32

SW-4, 31 DEC 2020 to 28 JAN 2021

SW-4, 31 DEC 2020 to 28 JAN 2021