

ILS or LOC X RWY 14

LOC I-HIF <b>109.9</b>	APCH CRS <b>139°</b>	Rwy Ldg <b>13,500</b> TDZE <b>4786</b> Arprt Elev <b>4789</b>
---------------------------	-------------------------	---

AL-296 [USAF]

HILL AFB (KHIF)

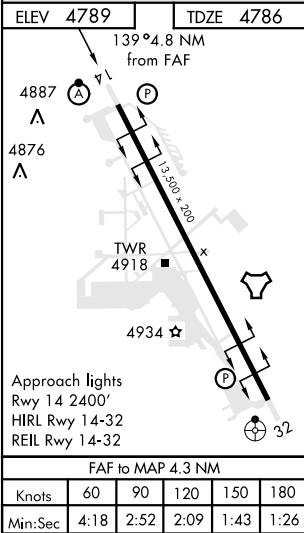
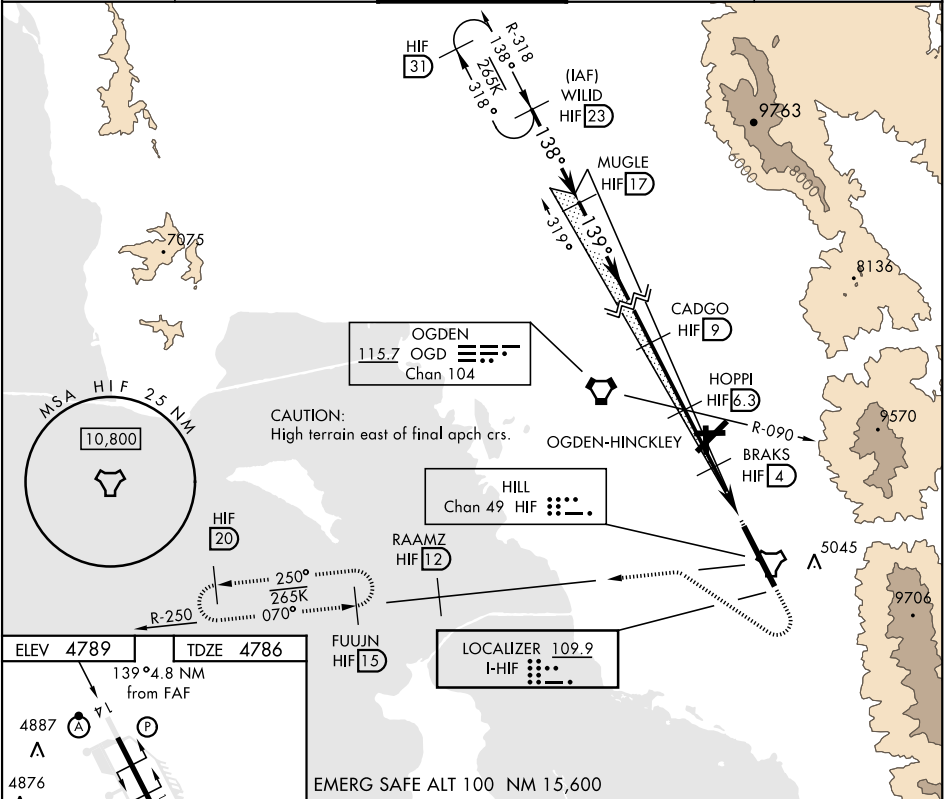
RADAR or DME required for LOC.

- ▼ \* When ALS inop, increase RVR to 40 and vis to ¾ mile.  
\*\* When ALS inop, increase RVR to 55 and vis to 1 mile.  
\*\*\* Circling not authorized in sector NE of Rwy 14-32.



MISSED APPROACH: Climb to 5300, then turn right heading 290°, remain within HIF TACAN 5.7 DME until established on 290° heading. Intercept the HIF R-250 outbound. Cross RAAMZ at 6500, then climb and maintain 7200 direct to FUJUN and hold.

ATIS <b>134.925 397.9</b>	SALT LAKE CITY APP CON <b>121.1 319.25</b>	HILL TOWER <b>127.15 263.15</b>	GND CON <b>121.6 275.8</b>	CLNC DEL <b>124.1 335.8</b>
------------------------------	---	------------------------------------	-------------------------------	--------------------------------



EMERG SAFE ALT 100 NM 15,600

WILID  
HIF 23

8600

MUGLE  
Intcp Lczt  
HIF 17

7000

CADGO  
HIF 9

6300

HOPPI  
HIF 6.3  
OGD R-090

5300

5300

↑

hdg  
290°

↷

HIF  
R-250

↑

↑ LOC only

GS 2.80°  
TCH 57

138°

139°

BRAKS  
HIF 4

DITLE  
HIF 2

TACAN

4.3 NM

5 NM

7000

6300

5700

CATEGORY	A	B	C	D	E
S-ILS 14 *		4986/24	200	(200-½)	
S-LOC 14 **		5040/24	254	(300-½)	
***					
<div><div>CIRCLING</div></div>	5240-1	451 (500-1)	5240-1½ 451 (500-1½)	5340-2 551 (600-2)	5860-3 1071 (1100-3)

ILS or LOC X RWY 14

SW-4, 31 DEC 2020 to 28 JAN 2021

SW-4, 31 DEC 2020 to 28 JAN 2021