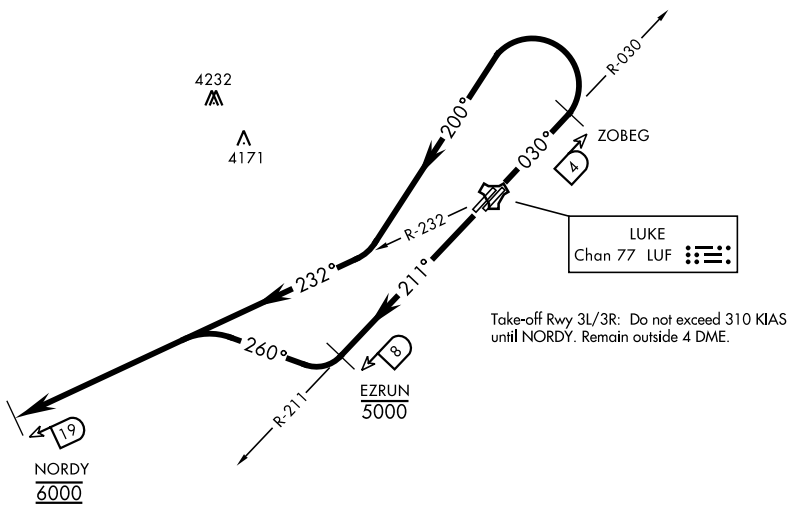


ATIS ★134.925 269.9
CLNC DEL
126.25 273.475
GND CON
133.175 335.8
LUKE TOWER ★
119.1 379.9
LUKE DEP CON
118.15 363.125

Rwy	Knots	60	120	180	240	300	360
3L/R ★	V/V(fpm)	350	700	1050	1400	1750	2100
21L/R †	V/V(fpm)	280	560	840	1120	1400	1680

★ Minimum Climb Rate to 6000
† ATC Climb Rate to 6000



RADAR REQUIRED

4276
A

▼

DEPARTURE ROUTE DESCRIPTION

TAKE-OFF RWY 3L/R: Climb tracking 030°. Abeam LUF TACAN R-030/4 DME (ZOBEG) turn left on a track of 200° to intercept and proceed via LUF R-232 to 19 DME (NORDY). Remain outside 4 DME LUF. Then via (assigned route/stereo). Cross NORDY at and maintain 6000 (or as assigned by ATC).

TAKE-OFF RWY 21L/R: Climb tracking 211°. Abeam LUF TACAN R-211/8 DME (EZRUN) turn right on a track of 260° to intercept and proceed via LUF R-232 to 19 DME (NORDY). Then via (assigned route/stereo). Cross 8 DME at or below 5000, cross NORDY at and maintain 6000 (or as assigned by ATC).

SW-4, 31 DEC 2020 to 28 JAN 2021

SW-4, 31 DEC 2020 to 28 JAN 2021