

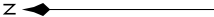
SW-4, 31 DEC 2020 to 28 JAN 2021

TOP ALTITUDE:  
8000

(ECLPS1.ECLPS) 18144  
ECLPS ONE DEPARTURE (RNAV)

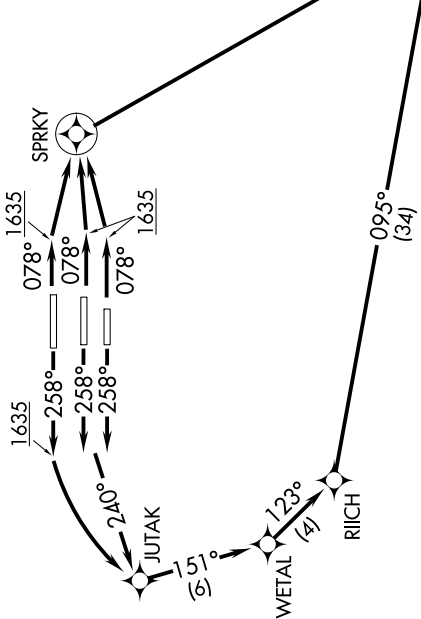
AL-322 (FAA) PHOENIX SKY HARBOR INTL (PHX)  
PHOENIX, ARIZONA

D-ATIS 127.575  
CLNC DEL 118.1 269.2  
CPDIC  
GND CON 119.75 269.2 (NORTH)  
132.55 269.2 (SOUTH)  
PHOENIX TOWER 118.7 278.8 (Rwy 8-26)  
120.9 254.3 (Rwys 7L-25R, 7R-25L)  
PHOENIX DEP CON 126.8 269.6



TAKEOFF MINIMUMS

Rwys 7L/R, 8: Standard with minimum climb of 500' per NM to 1635.  
Rwys 25L/R, 26: Standard with minimum climb of 500' per NM to 1900.



NOTE: Chart not to scale.

DEPARTURE ROUTE DESCRIPTION

TAKEOFF RUNWAYS 7L/R, 8: Climb heading 078° to 1635, then direct to SPRKY, then right turn direct ECLPS. Thence. . .  
TAKEOFF RUNWAYS 25L/R: Climb heading 258° to intercept course 240° to JUTAK, then on track 151° to WETAL, then on track 123° to RIICH, then on track 095° to ECLPS. Thence. . .  
TAKEOFF RUNWAY 26: Climb heading 258° to 1635, then left turn direct JUTAK, then on track 151° to WETAL, then on track 123° to RIICH, then on track 095° to ECLPS. Thence. . .  
. . . on track 111° to KATMN. Then on (transition), expect filed altitude 3 minutes after departure.

PHASE TRANSITION (ECLPS1.PHASE)

- NOTE: RNAV 1.
- NOTE: Turbojets and turboprops only.
- NOTE: RADAR required.
- NOTE: DME/DME/IRU or GPS required.
- NOTE: For non-GPS equipped aircraft, TFD and DUG DMEs must be operational.