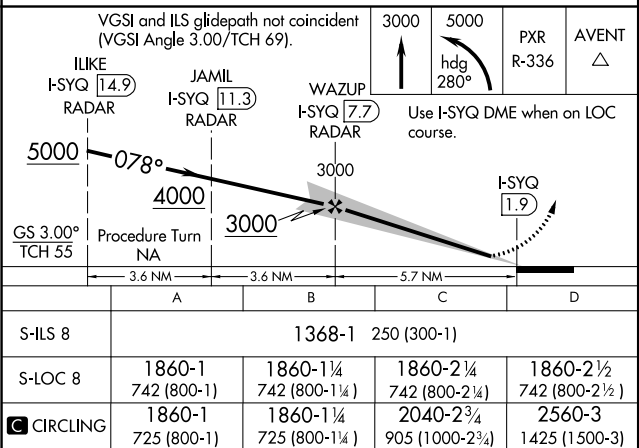


ILS or LOC RWY 8
PHOENIX SKY HARBOR INTL (PHX)

MISSED APPROACH: Climb to 3000, then climbing left turn to 5000 via heading 280° and PXR R-336 to AVENT/PXR 15.9 DME and hold.

DME or RADAR REQUIRED



SW-4, 31 DEC 2020 to 28 JAN 2021