

APP CRS
258°

Rwy Idg
11489

TDZE
1135

Apt Elev
1135

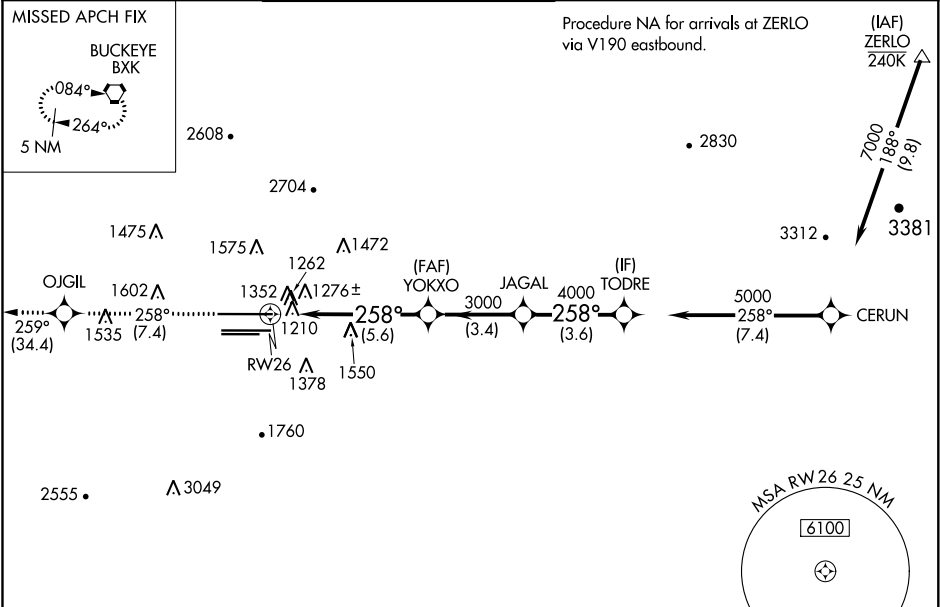
RNAV (RNP) Z RWY 26

PHOENIX SKY HARBOR INTL (PHX)

GPS required. For uncompensated Baro-VNAV systems, procedure NA below 1°C (34°F) or above 46°C (116°F). Simultaneous approach authorized with ILS or LOC Rwy 25L. Used of FD or AP providing RNAV track guidance required during simultaneous operations.

MISSED APPROACH: Climb to 5000 via track 258° to OJGIL and via track 259° to BXK VORTAC and hold.

D-ATIS 127.575	PHOENIX APP CON 128.65 353.9	PHOENIX TOWER 118.7 278.8 (Rwy 8-26) 120.9 254.3 (Rwy 7L-25R, 7R-25L)	GND CON 119.75 269.2 (N) 132.55 269.2 (S)	CLNC DEL 118.1 269.2	CPDLC
--------------------------	--	---	---	--------------------------------	-------



ELEV 1135

D

TDZE 1135

1266

1150±

1123

11489 X 150

10300 X 150

7800 X 150

25L

25R

1313

258° to RW26

TWR 1428

5000

↑

tr 258°

OJGIL

tr 259°

BXK

VGSI and RNAV glidepath not coincident (VGSI Angle 3.00/TCH 71).

YOKXO

JAGAL

TODRE

Procedure Turn NA

RW26

3000

4000

258°

5000

GP 3.00° TCH 54

5.6 NM

3.4 NM

3.6 NM

CATEGORY	A	B	C	D
RNP 0.11 DA		1490-1¼	355 (400-1¼)	
RNP 0.20 DA		1590-1½	455 (500-1½)	
RNP 0.30 DA		1654-1¾	519 (600-1¾)	

AUTHORIZATION REQUIRED

HIRL Rwys 8-26, 7L-25R and 7R-25L
REIL Rwy 26