


WAAS CH 65811 W07A	APP CRS 078°	Rwy Idg 10300 TDZE 1116 Apt Elev 1135
--	------------------------	--

RNAV (GPS) Y RWY 7L

PHOENIX SKY HARBOR INTL (PHX)

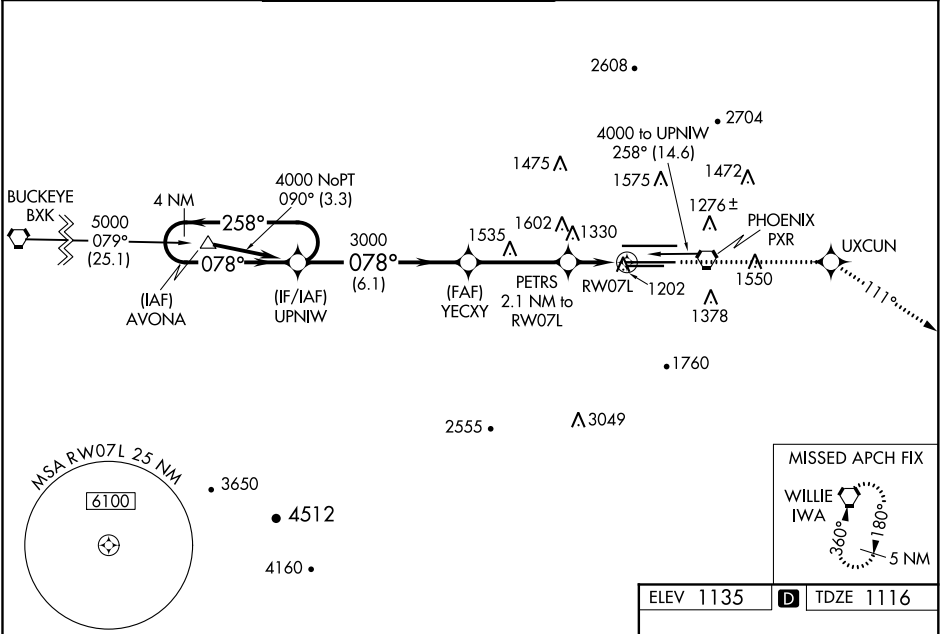
⚠ For inoperative ALS, increase visibility LPV all Cats to RVR 4500, LNAV/VNAV all Cats to RVR 6000, LNAV Cats C/D to 1 $\frac{3}{8}$ SM. For uncompensated Baro-VNAV systems, LNAV/VNAV NA below -17°C (2°F) or above 46°C (114°F). DME/DME RNP-0.3 NA. Simultaneous approach authorized with ILS or LOC Rwy 8. Use of FD or AP providing RNAV track guidance required during simultaneous operations. LNAV procedure NA during simultaneous operations.

MALSR



MISSED APPROACH: Climb to 5000 direct UXCUN and via 111° track to IWA VORTAC and hold.

D-ATIS 127.575	PHOENIX APP CON 128.65 353.9	PHOENIX TOWER 118.7 278.8 (Rwy 8-26) 120.9 254.3 (Rwy 7L-25R, 7R-25L)	GND CON 119.75 269.2 (N) 132.55 269.2 (S)	CLNC DEL 118.1 269.2	CPDLC
--------------------------	--	---	---	--------------------------------	-------



VGSI and RNAV glidepath not coincident (VGSI Angle 3.00/TCH 73).

4 NM Holding Pattern

UPNIW

YECCY

PETRS 2.1 NM to RW07L

*1.3 NM to RW07L

RW07L

*1840

GP 3.00° TCH 57

6.1 NM

3.6 NM

0.8

1.3 NM

CATEGORY	A	B	C	D
LPV DA	1389/24		273 (300-1/2)	
LNAV/VNAV DA	1519/50		403 (400-1)	
LNAV MDA	1580/24	464 (500-1/2)	1580/40	1580/50
			464 (500-3/4)	464 (500-1)
CIRCLING	1740-1	605 (700-1)	2040-2 3/4	2560-3
			905 (1000-2 3/4)	1425 (1500-3)

ELEV 1135

TDZE 1116

1266

1150 ±

1123

10300 X 150

7800 X 150

1428

1313

078° to RW07L