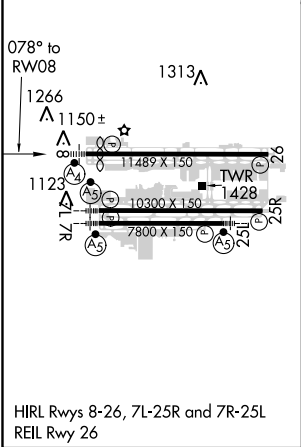
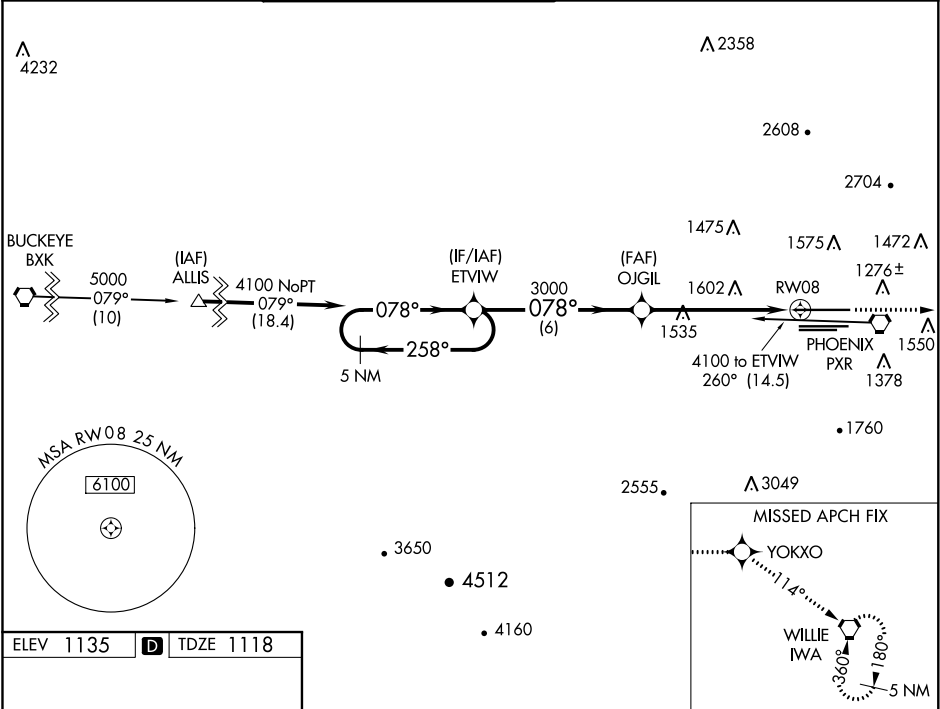


WAAS CH <b>86611</b> <b>W08A</b>	APP CRS <b>078°</b>	Rwy Idg <b>10591</b> TDZE <b>1118</b> Apt Elev <b>1135</b>
--	------------------------	--

RNAV (GPS) Y RWY 8  
PHOENIX SKY HARBOR INTL (PHX)

<div><div></div><div></div></div>	Inoperative table does not apply. DME/DME RNP- 0.3 NA. Rwy 8 helicopter visibility reduction below 1 SM NA.			<div><div></div><div></div></div>	MALSF <div><div></div><div></div></div> MISSED APPROACH: Climb to 5000 direct YOKXO and via 114° track to IWA VORTAC and hold.		
D-ATIS 127.575	PHOENIX APP CON 128.65 353.9	PHOENIX TOWER 118.7 278.8 (Rwy 8-26) 120.9 254.3 (Rwy 7L-25R, 7R-25L)			GND CON 119.75 269.2 (N) 132.55 269.2 (S)	CLNC DEL 118.1 269.2	CPDLC



VGSI and RNAV glidepath not coincident (VGSI Angle 3.00/TCH 69).				5000 ↑	YOKXO ✦	114° tr	IWA ⬡
5 NM Holding Pattern				ETVIW			
4100 ← 258° 078° →				OJGIL			
GP 3.00° TCH 54				RW08			
				6 NM		5.7 NM	
CATEGORY	A		B		C		D
LPV DA	1394-1 276 (300-1)						
LNAV MDA	1860-1 742 (800-1)		1860-1¼ 742 (800-1¼)		1860-2¼ 742 (800-2¼)		1860-2½ 742 (800-2½)
CIRCLING	1860-1 725 (800-1)		1860-1¼ 725 (800-1¼)		2040-2¾ 905 (1000-2¾)		2560-3 1425 (1500-3)

SW-4, 31 DEC 2020 to 28 JAN 2021

SW-4, 31 DEC 2020 to 28 JAN 2021