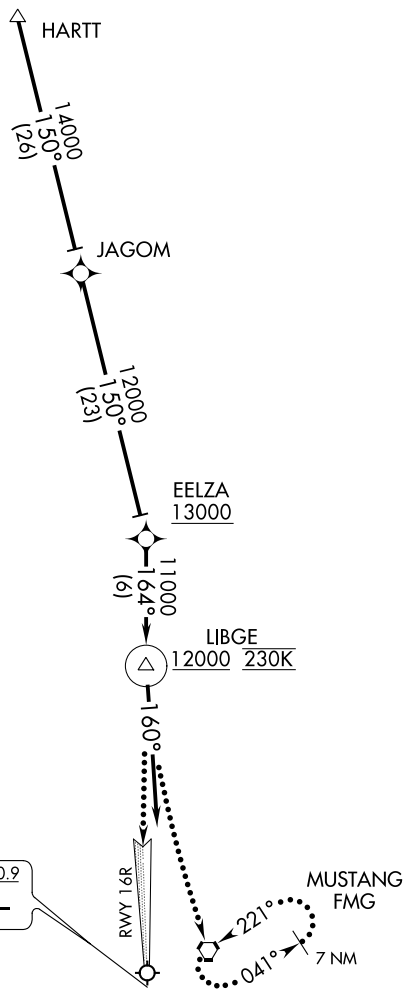


D-ATIS  
135.8 363.0  
RENO TOWER  
118.7 257.8  
NORCAL APP CON  
119.2 279.55  
126.3 353.9

CAUTION: Intense  
Glider Activity  
to FL180.



LOCALIZER 110.9  
I-RNO  
Chan 46

- NOTE: GPS required.
- NOTE: RNAV 1.
- NOTE: Cross EELZA at or above 13000.
- NOTE: Cross LIBGE at or above 12000 at 230 KTS.

NOTE: Chart not to scale.

ARRIVAL ROUTE DESCRIPTION

From HARTT on track 150° to JAGOM, then on track 150° to cross EELZA at or above 13000, then on track 164° to cross LIBGE at or above 12000 at 230 KTS. Then on heading 160° expect ILS RWY 16R or RADAR vectors.

LOST COMMUNICATIONS

At LIBGE, proceed inbound via RWY 16R ILS approach. If unable, climbing left turn to 12000 direct FMG VORTAC and hold.

SW-4, 31 DEC 2020 to 28 JAN 2021

SW-4, 31 DEC 2020 to 28 JAN 2021