

LOC/DME I-AGY 109.9 Chan 36	APP CRS 344°	Rwy Idg TDZE 4410 Apt Elev 4415
---	------------------------	---

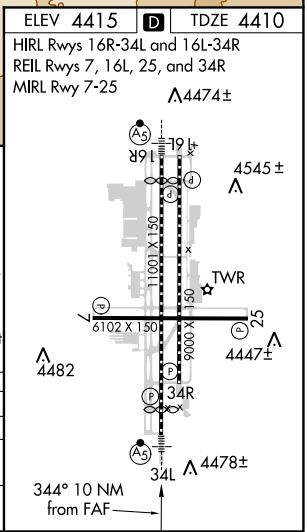
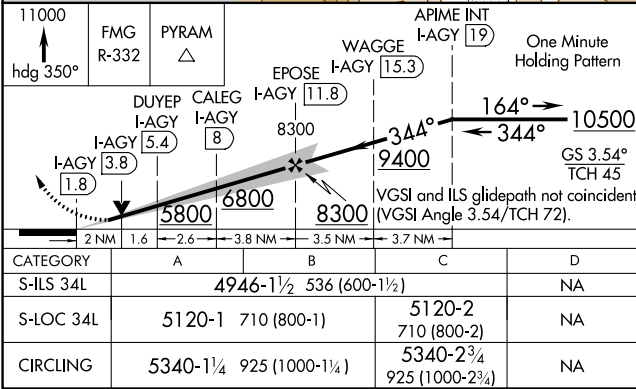
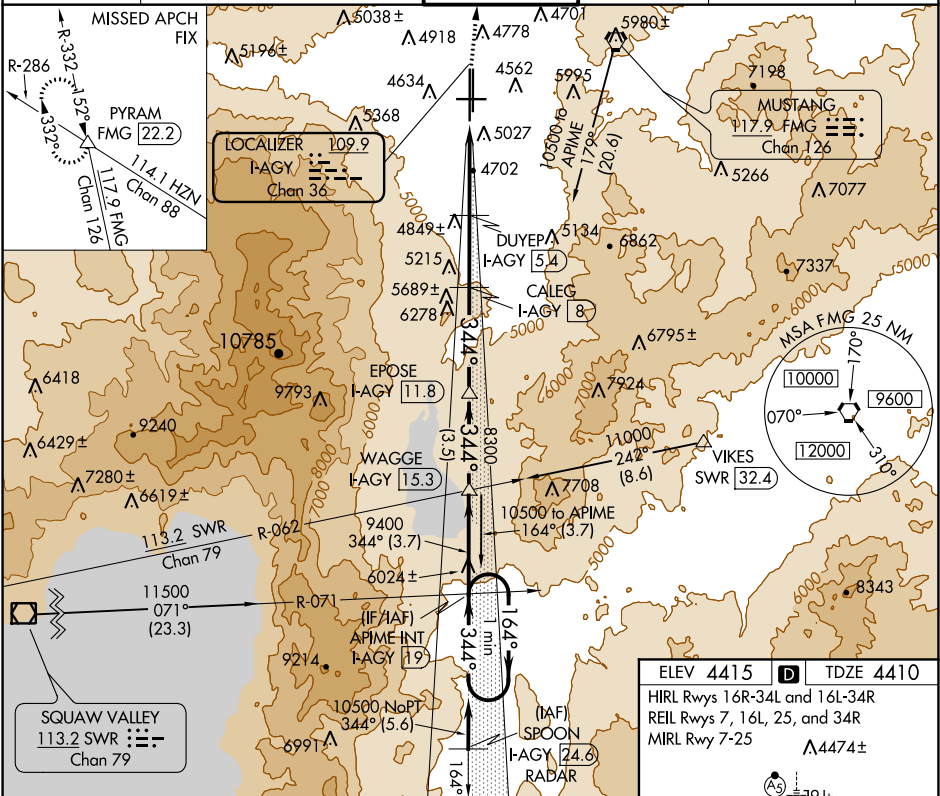
ILS or LOC/DME RWY 34L
RENO/TAHOE INTL (RNO)

⚠ Inoperative table does not apply.
If local altimeter setting not received, procedure NA.
⚠ -15°C Circling Rwy 7 NA at night.

MALSR

MISSED APPROACH: Climb to 11000 via heading 350° and FMG VORTAC R-332 to PYRAM INT/FMG 22.2 DME and hold, continue climb-in-hold to 11000.

D-ATIS 135.8 363.0	NORCAL APP CON 119.2 279.55 126.3 353.9	RENO TOWER 118.7 257.8	GND CON 121.9 348.6	CLNC DEL 124.9 370.85	CPDLC
------------------------------	---	----------------------------------	-------------------------------	---------------------------------	-------



SW-4, 31 DEC 2020 to 28 JAN 2021

SW-4, 31 DEC 2020 to 28 JAN 2021