





LOC/DME I-RNO <b>110.9</b> Chan <b>46</b>	APP CRS <b>164°</b>	Rwy Idg <b>10001</b> TDZE <b>4415</b> Apt Elev <b>4415</b>
---	------------------------	--

ILS Z or LOC Z RWY 16R  
RENO/TAHOE INTL (RNO)

   -15°C	Circling Rwy 7 NA at night. DME/DME RNP-0.3 NA. DME required. RNAV 1-GPS required. # For inop MALSR, increase S-LSL 16R all Cats visibility to 2 1/2 mile. † RVR 1800 authorized with use of FD or AP or HUD to DA.		MISSED APPROACH: Climb to 13000 on the RNAV missed approach route to YARKU and hold, continue climb-in-hold to 13000. † Missed approach requires a minimum climb of 390 feet per NM to 8000.
---	--	---	---

D-ATIS	NORCAL APP CON				RENO TOWER		GND CON	CLNC DEL	CPDLC
135.8 363.0	119.2	279.55	126.3	353.9	118.7	257.8	121.9 348.6	124.9 370.85	

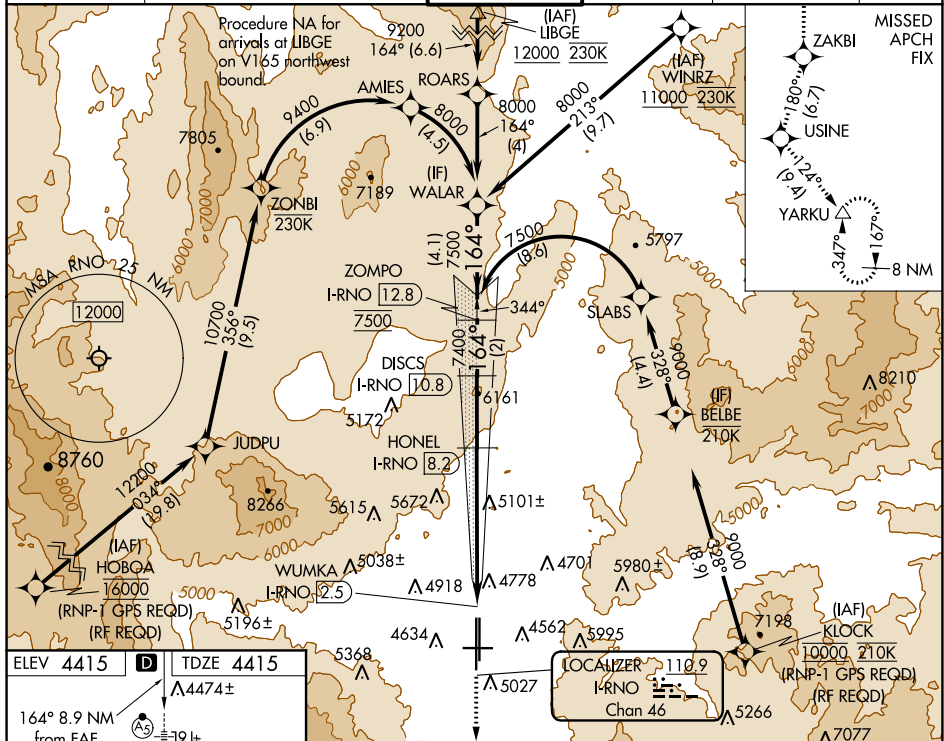


Figure 1 is a plan view of the ILS glidepath for RWY 16R. The diagram shows the glidepath starting at 6102 x 1510, passing through 11000 x 1510, and ending at 9000 x 25. Key points include TWR, 4447±, 4482, 34L, 4478±, 4545±, 13000, ZAKBI, USINE, YARKU, VGS1 and ILS glidepath not coincident (VGS1 Angle 3.06/TCH 77), DISCS, ZOMPO, I-RNO, HONEL, 7400, 6540\*, 7400, 164°, 8000, GS 3.10° TCH 59, 0.6, 2.2 NM, 3.5 NM, 2.6 NM, 2 NM, 4.1 NM, 5420/40, 5420/55, 5420-1½, 5420-1½, 6480-3, 2065 (2100-3).