

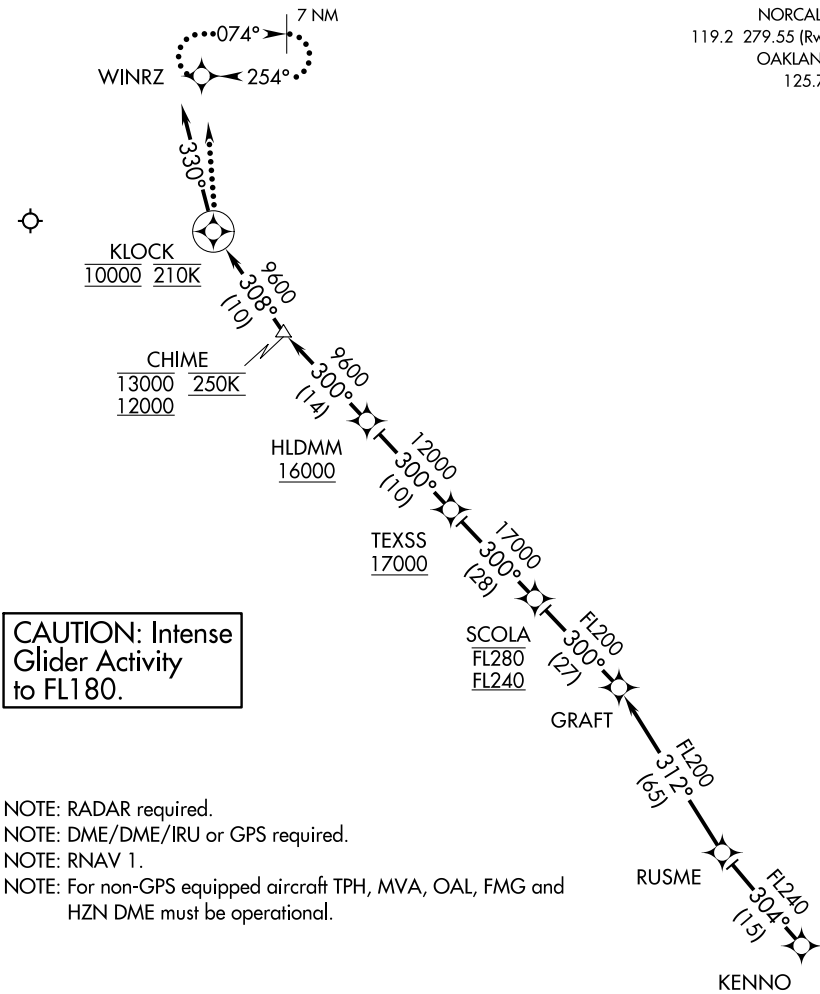
(KENNO.KENNO2) 17173

KENNO TWO ARRIVAL (RNAV)

AL-346 (FAA)

RENO/TAHOE INTL (RNO)
RENO, NEVADA

D-ATIS
135.8 363.0
NORCAL APP CON
119.2 279.55 (Rwys 16 L/R)
OAKLAND CENTER
125.75 284.65



NOTE: Chart not to scale.

ARRIVAL ROUTE DESCRIPTION

From KENNO on track 304° to RUSME, then as depicted to cross KLOCK at 10000' at 210K, then on heading 330°. Rwy 16L/16R expect RADAR vectors to final approach course.

LOST COMMUNICATIONS:

At KLOCK, turn right direct to WINRZ and hold, maintain 10000'.

KENNO TWO ARRIVAL (RNAV)

(KENNO.KENNO2) 31MAY12

RENO, NEVADA
RENO/TAHOE INTL (RNO)

SW-4, 31 DEC 2020 to 28 JAN 2021

SW-4, 31 DEC 2020 to 28 JAN 2021