

RENO NINE DEPARTURE

AL-346 (FAA)

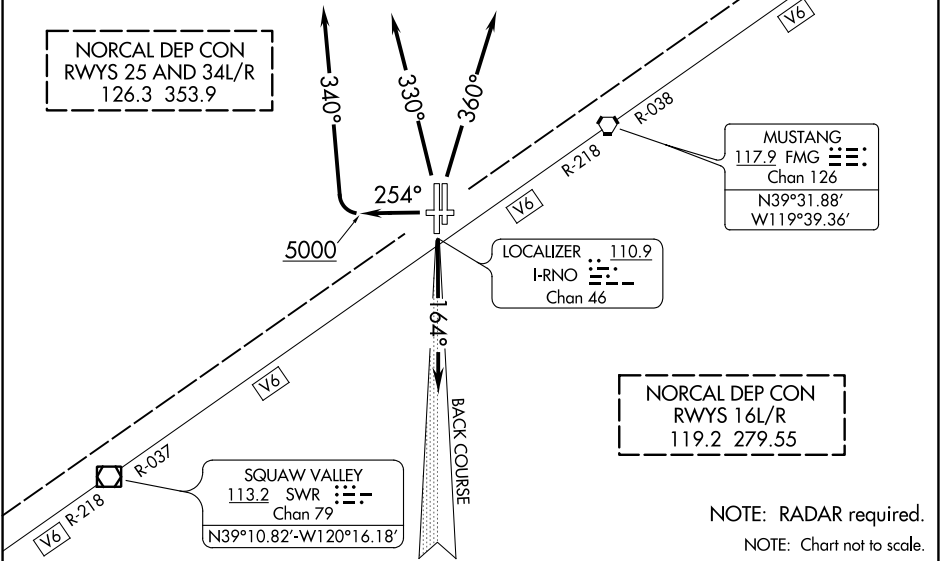
RENO/TAHOE INTL (RNO)  
RENO, NEVADA

TAKEOFF MINIMUMS

Rwy 7: NA- Obstacles.  
Rwy 16L: Standard with minimum climb of 730' per NM to 10900,  
or 600-1¼ with minimum climb of 352' per NM to 10900.  
Rwy 16R: Standard with minimum climb of 460' per NM to 10900,  
or 300-1 with minimum climb of 395' per NM to 10900.  
Rwy 25: Standard with minimum climb of 500' per NM to 9700.  
Rwys 34L/R: Standard with minimum climb of 480' per NM to 8700,  
or 500-1½ with minimum climb of 430' per NM to 8700.

TOP ALTITUDE:  
FL190

D-ATIS  
135.8 363.0  
CLNC DEL  
124.9 370.85  
CPDLC  
GND CON  
121.9 348.6  
RENO TOWER  
118.7 257.8



DEPARTURE ROUTE DESCRIPTION

**TAKEOFF RUNWAYS 16L/R:** Climb on heading 164° and I-RNO localizer south course.  
Thence. . . .  
**TAKEOFF RUNWAY 25:** Climb heading 254° to 5000 then climbing right turn heading 340°.  
Thence. . . .  
**TAKEOFF RUNWAYS 34L/R:** Climb heading 330° CW 360° as assigned by ATC.  
Thence. . . .  
...All aircraft maintain FL190 or assigned altitude. Expect clearance to requested altitude 5 minutes after departure. Expect RADAR vectors to assigned route/fix.  
**LOST COMMUNICATIONS:** If not in contact with departure control within one minute after takeoff, maintain assigned heading until passing 10000, thence. . . .  
...**RUNWAYS 16L/R DEPARTURES:** Turn left direct FMG VORTAC, then via assigned route.  
...**RUNWAYS 25 and 34L/R DEPARTURES:** Turn right direct FMG VORTAC, then via assigned route.

RENO NINE DEPARTURE