

| | | |
|---------|----------|-------|
| APP CRS | Rwy Idg | 10011 |
| 344° | TDZE | 4410 |
| | Apt Elev | 4415 |

RNAV (RNP) Z RWY 34L

RENO/TAHOE INTL (RNO)

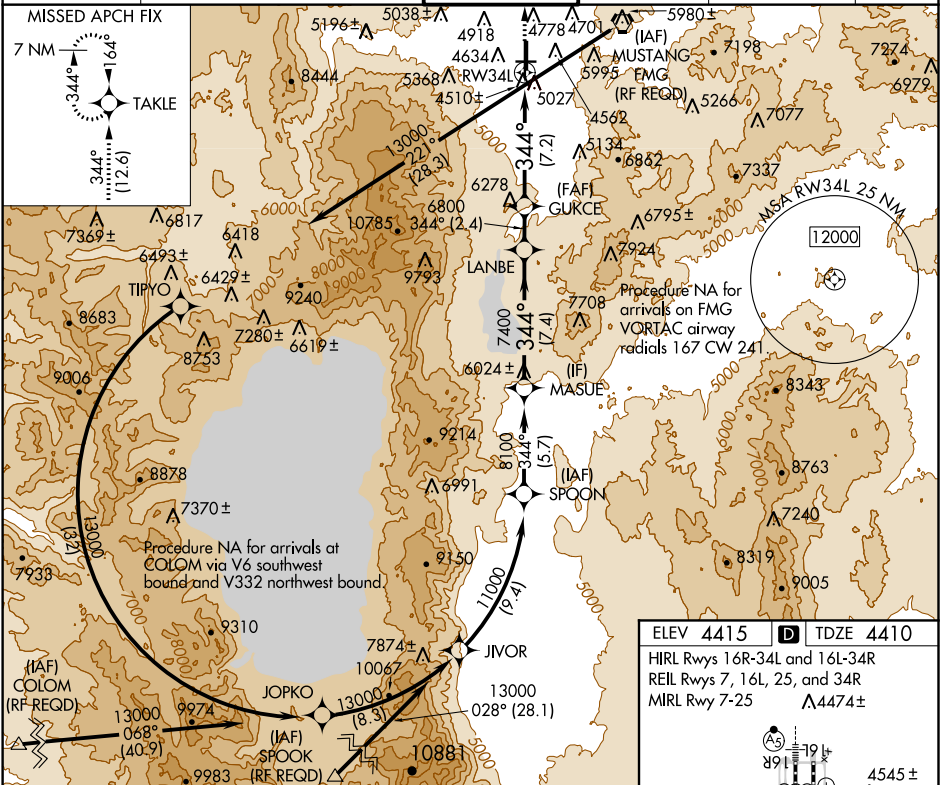
GPS required. For uncompensated Baro-VNAV systems, procedure NA below -13°C (8°F) or above 40°C (104°F). For inoperative MALSR increase visibility RNP 0.12 to 1¼ mile and RNP 0.30 to 4 miles.

***Missed approach requires minimum climb of 243 feet per NM to 7200.**

MALSR

MISSED APPROACH: Climb to 10000 via 344° track to TAKLE and hold, continue climb-in-hold to 10000.

| | | | | | | | | |
|-------------|----------------|--------|-------------|------------|-------|-------------|--------------|-------|
| D-ATIS | NORCAL APP CON | | | RENO TOWER | | GND CON | CLNC DEL | CPDLC |
| 135.8 363.0 | 119.2 | 279.55 | 126.3 353.9 | 118.7 | 257.8 | 121.9 348.6 | 124.9 370.85 | |



| | | | | |
|--------------|-----------------------|--|--------|--------|
| 10000 | TAKLE | VGSI and RNAV glidepath not coincident (VGSI Angle 3.54/TCH 72). | | MASUE |
| 344° tr | | GUKCE | LANBE | |
| | | 6800 | 7400 | 8100 |
| | | 7.2 NM | 2.4 NM | 7.4 NM |
| CATEGORY | A | B | C | D |
| RNP 0.12 DA* | 4771-1 361 (400-1) | | | |
| RNP 0.30 DA | 5342-2¾ 932 (1000-2¾) | | | |

ELEV 4415 **D** TDZE 4410

HIRL Rwy 16R-34L and 16L-34R

REIL Rwy 7, 16L, 25, and 34R

MIRL Rwy 7-25 Δ 4474±

AUTHORIZATION REQUIRED

SW-4, 31 DEC 2020 to 28 JAN 2021

SW-4, 31 DEC 2020 to 28 JAN 2021