

WAAS CH 72909 W16A	APP CRS 164°	Rwy Idg TDZE 4415 Apt Elev 4415
--	------------------------	---

RNAV (GPS) X RWY 16L
RENO/TAHOE INTL (RNO)

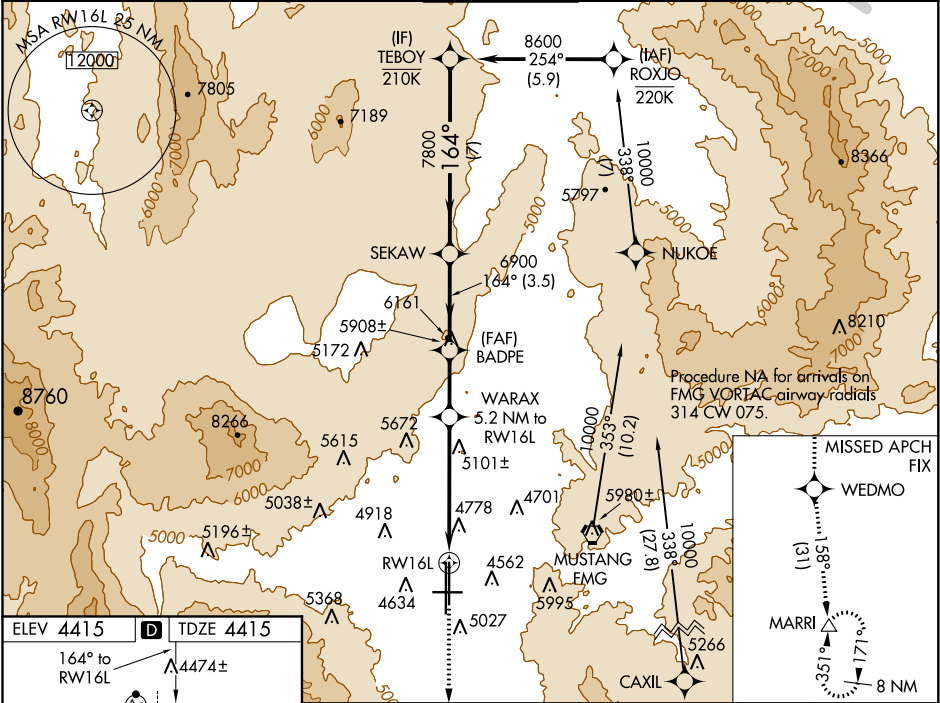
RNP APCH.

Circling Rwy 7 NA at night. Rwy 16L helicopter visibility reduction below 3/4 SM NA. For uncompensated Baro-VNAV systems, LNAV/VNAV NA below -9°C or above 54°C.

-15°C

MISSED APPROACH: Climb to 13000 direct WEDMO and on track 158° to MARRI and hold.

D-ATIS 135.8 363.0	NORCAL APP CON 119.2 279.55 126.3 353.9	RENO TOWER 118.7 257.8	GND CON 121.9 348.6	CLNC DEL 124.9 370.85	CPDLC
------------------------------	---	----------------------------------	-------------------------------	---------------------------------	-------



ELEV 4415 TDZE 4415

MIRL Rwy 7-25
REIL Rwy 7, 16L, 25, and 34R
HIRL Rwy 16R-34L and 16L-34R

VGSi and RNAV glidepath not coincident (VGSi Angle 3.00/TCH 75).				13000	WEDMO	tr 158°	MARRI
TEBOY				SEKAW	BADPE	WARAX 5.2 NM to RWY16L	*LNAV only.
8600				7800	6900	*6140	
GP 3.00° TCH 55				7 NM	3.5 NM	2.4 NM	2.5 NM
CATEGORY	A	B	C	D			
LPV DA	5149-2		734 (800-2)				
LNAV/VNAV DA	5098-2		683 (700-2)				
LNAV MDA	5360-1¼ 945 (1000-1¼)		5360-2½ 945 (1000-2½)				
CIRCLING	5360-1¼ 945 (1000-1¼)		6460-3 2045 (2100-3)				

SW-4, 31 DEC 2020 to 28 JAN 2021

SW-4, 31 DEC 2020 to 28 JAN 2021