

LOC/DME	I-MOY	APP CRS	Rwy Idg	12002
109.5		164°	TDZE	4227
Chan 32			Apt Elev	4227

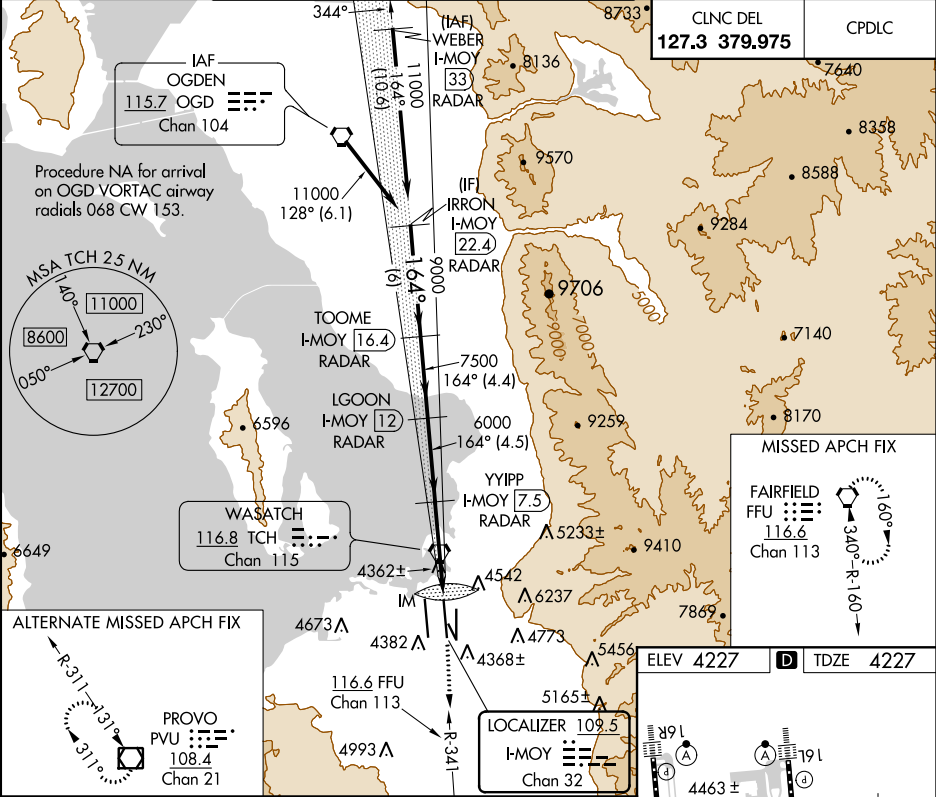
ILS RWY 16L (CAT II & III)

SALT LAKE CITY INTL (SLC)

Simultaneous approach authorized. DME or RADAR required.
CAT II: RVR 1000 authorized with specific OPSPEC, MSPEC, or
LOA approval and use of autoland or HUD to touchdown.

MISSED APPROACH: Climb to 4800 then climb to
10000 via FFU VORTAC R-341 to FFU VORTAC
and hold.

D-ATIS	SALT LAKE CITY	SALT LAKE CITY TOWER	GND CON
124.75	APP CON	118.3 257.8	123.775 348.6
125.625	125.7 284.6	(Rwy 16L-34R) (Rwys 14-32, 17-35)	(Rwys 14-32, 17-35) (Rwys 16L-34R, 16R-34L)



IRRON	VGSI and ILS glidepath not coincident (VGSI Angle 3.00/TCH 70).	FFU
I-MOY 22.4	RADAR	FFU R-341
TOOME	I-MOY 16.4	
LGOON	I-MOY 12	
YYIPP	I-MOY 7.5	
11000	9000	7500
6000	4328	
GS 3.00°	TCH 55	
6 NM	4.4 NM	4.5 NM
5.3 NM	1024'	
CATEGORY	A	B
S-ILS 16L	CAT II RA 108/12	100 DA 4327
S-ILS 16L	CAT IIIa	RVR 07
S-ILS 16L	CAT IIIb	RVR 03
S-ILS 16L	CAT IIIc	NA

CATEGORY II & III ILS - SPECIAL AIRCREW
& AIRCRAFT CERTIFICATION REQUIRED

