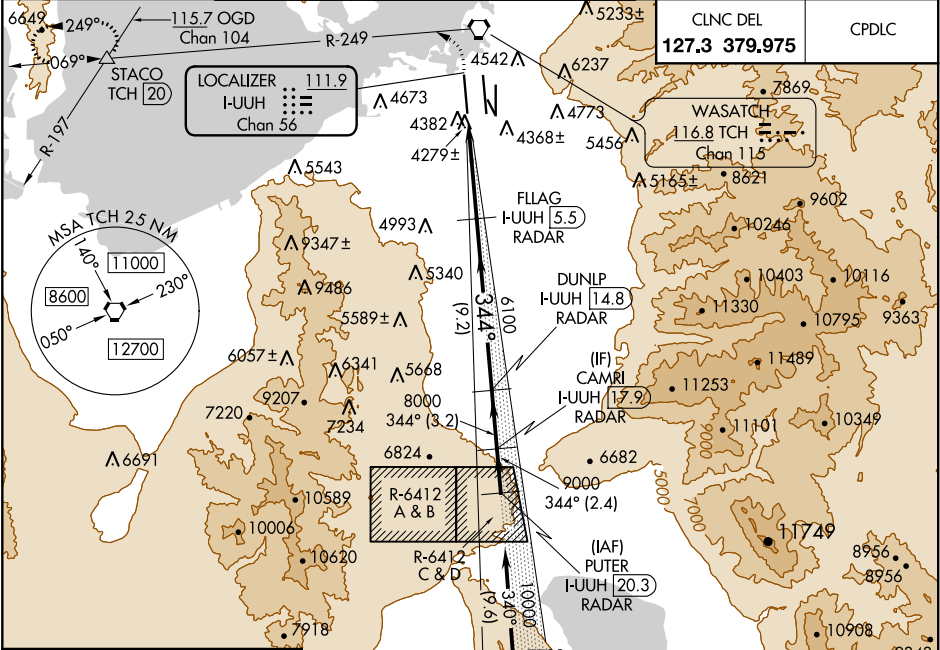


LOC/DME I-UUHH	APP CRS	Rwy Idg	12000
111.9	344°	TDZE	4226
Chan 56		Apt Elev	4227

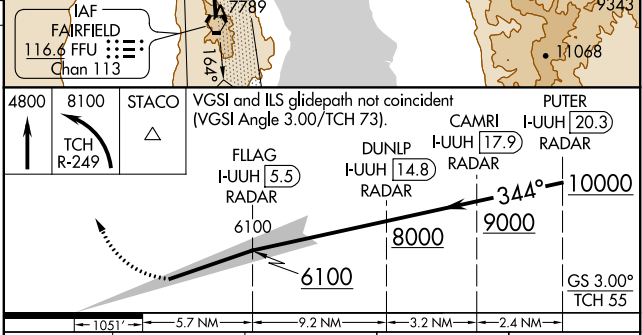
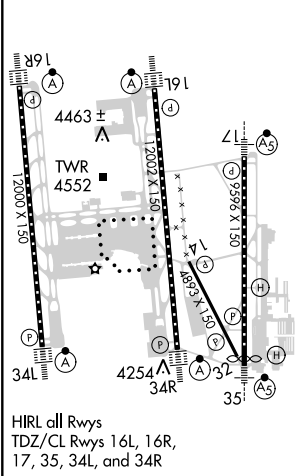
ILS RWY 34L (CAT II & III)
SALT LAKE CITY INTL (SLC)

RADAR required for arrivals at PUTER. DME or RADAR required.		ALSF-2	MISSED APPROACH: Climb to 4800 then climbing left turn to 8100 on TCH VORTAC. R-249 to STACO INT/TCH 20 DME and hold.
Simultaneous approach authorized. CAT II: RVR 1000 authorized with specific OPSPEC, MSPEC or LOA approval and use of autoland or HUD to touchdown.			

D-ATIS	SALT LAKE CITY APP CON	SALT LAKE CITY TOWER	GND CON
124.75	125.7	119.05 257.8 118.3 257.8 132.65 336.4	121.9 348.6 123.775 348.6
125.625	125.7 284.6	(Rwy 16L-34R) (Rwys 14-32, 17-35) (Rwy 16R-34L)	(Rwys 14-32, 17-35) (Rwys 16L-34R, 16R-34L)



ELEV 4227	TDZE 4226
-----------	-----------



CATEGORY	A	B	C	D
S-ILS 34L	CAT II RA 102/12 100 DA 4326			
S-ILS 34L	CAT IIIa RVR 07			
S-ILS 34L	CAT IIIb RVR 03			
S-ILS 34L	CAT IIIc NA			
CATEGORY II & III ILS - SPECIAL AIRCREW & AIRCRAFT CERTIFICATION REQUIRED				

SW-4, 31 DEC 2020 to 28 JAN 2021

SW-4, 31 DEC 2020 to 28 JAN 2021