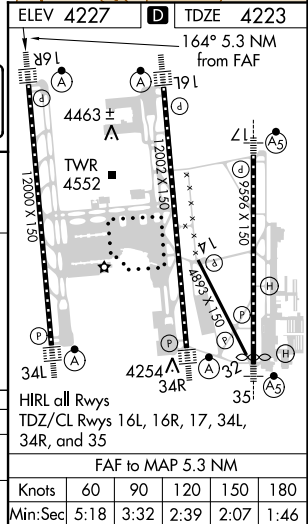
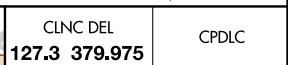


ILS or LOC RWY 16R
SALT LAKE CITY INTL (SLC)

MISSED APPROACH: Climb to 4800 then climbing right turn to 8100 on heading 300° and on TCH VORTAC R-249 to STACO INT/TCH 20 DME and hold.

GND CON			
121.9	348.6	123.775	348.6
(Rwys 14-32, 17-35)		(Rwys 16L-34R, 16R-34L)	



FAF to MAP 5.3 NM					
Knots	60	90	120	150	180
Min:Sec	5:18	3:32	2:39	2:07	1:46

SW-4 31 DEC 2020 to 28 JAN 2021