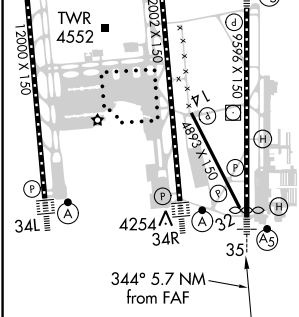
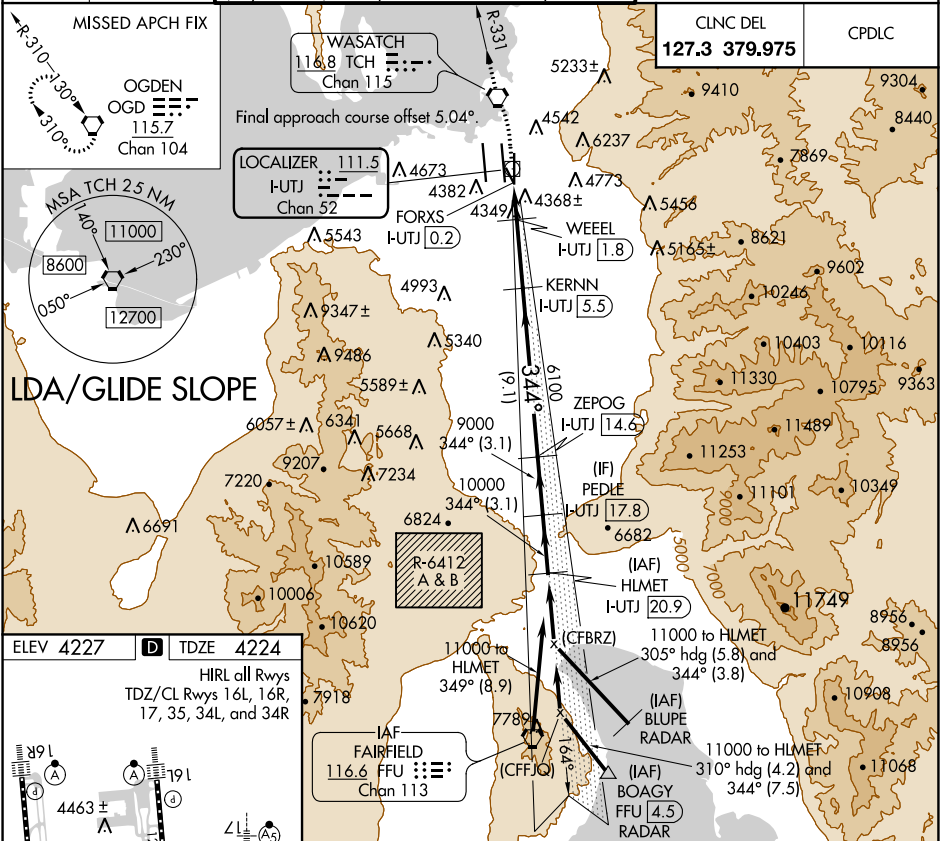


LOC/DME I-UTJ 111.5 Chan 52	APP CRS 344°	Rwy Idg TDZE Apt Elev 9273 4224 4227
---	------------------------	--

LDA RWY 35
SALT LAKE CITY INTL (SLC)

Simultaneous approach authorized. DME required. For inop ALS, increase S-LDA/GS 35 Cat E visibility to RVR 4000, increase S-LDA 35 Cat E visibility to 1 1/4 SM.	MALSR 	MISSED APPROACH: Climb to 4800 then climbing left turn to 9000 direct TCH VORTAC and on TCH VORTAC R-331 to OGD VORTAC and hold.
--	-----------	--

D-ATIS 124.75 125.625	SALT LAKE CITY APP CON 125.7 284.6	SALT LAKE CITY TOWER 119.05 257.8 118.3 257.8 132.65 336.4 (Rwys 16L-34R) (Rwys 14-32, 17-35) (Rwy 16R-34L)	GND CON 121.9 348.6 123.775 348.6 (Rwys 14-32, 17-35) (Rwys 16L-34R, 16R-34L)
---	---	--	--



4800	9000	TCH	TCH	OGD	VGSi and LDA glidepath not coincident (VGSi Angle 3.00°/TCH 74°).	
		R-331				
*LDA only	I-UTJ DME ANT. FORXS I-UTJ 0.2	WEEL I-UTJ 1.8	KERNIN I-UTJ 5.5	ZEPOG I-UTJ 14.6	PEDLE I-UTJ 17.8	HLMET I-UTJ 20.9
			6100			
			4900*	9000	10000	11000
					34°	
						GS 3.00° TCH 55
	1.1 NM	0.9 NM	3.7 NM	9.1 NM	3.1 NM	3.1 NM
CATEGORY	A	B	C	D	E	
S-LDA/GS 35	4474/24 250 (300-½)					
S-LDA 35	4660/24 436 (500-½)		4660/40 436 (500-¾)			