

BRYCE CANYON TRANSITION (BCE.QWENN5)  
MILFORD TRANSITION (MLF.QWENN5)

LANDING NORTH RUNWAYS 34R/L and 35: From QWENN on track 001° to FFU VORTAC, then as depicted to PLAGE, then on 344° heading. Rwy 34R intercept I-SLC localizer. Proceed inbound, expect ILS/Visual approach. Rwy 34L and 35 expect RADAR vectors to final approach course.

## LOST COMMUNICATIONS

At PLAGE, turn left direct to FFU VORTAC and hold. Maintain 11000.

NOTE: RADAR required.

NOTE: RNAV 1.

NOTE: DME/DME/IRU or GPS required.

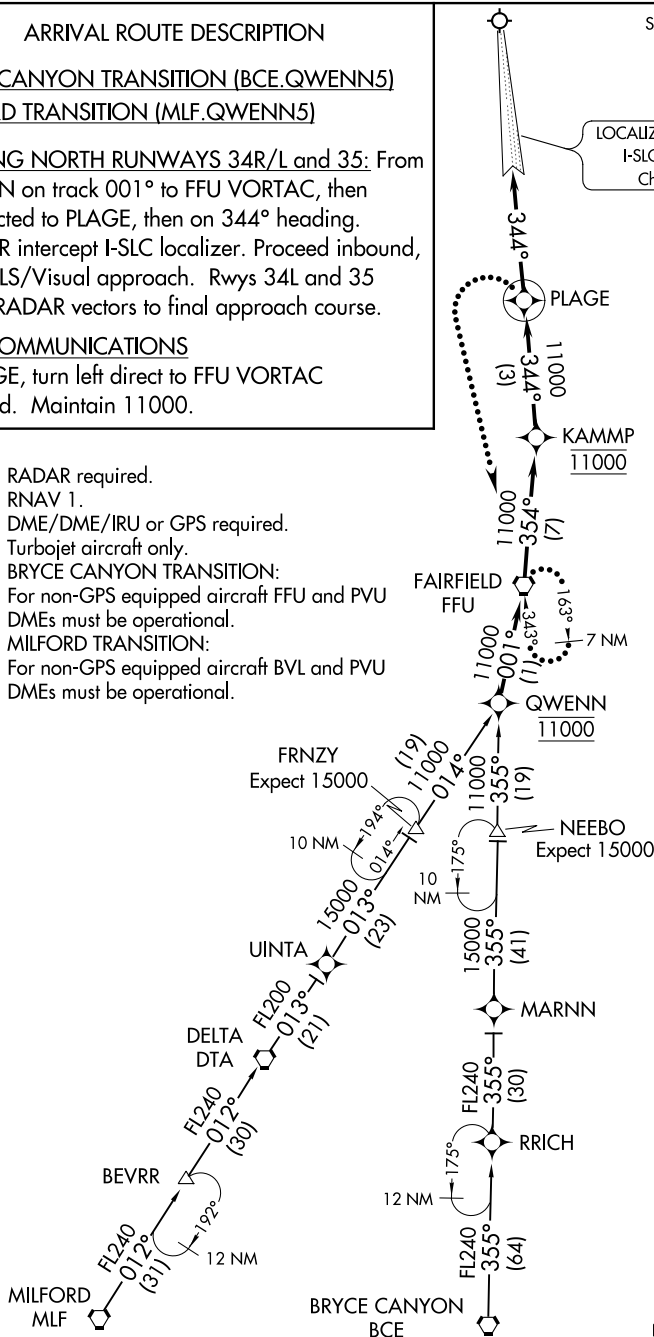
NOTE: Turbojet aircraft only.

NOTE: BRYCE CANYON TRANSITION:

For non-GPS equipped aircraft FFU and PVU DMEs must be operational.

NOTE: MILFORD TRANSITION:

For non-GPS equipped aircraft BVL and PVU DMEs must be operational.



NOTE: Chart not to scale.

## QWENN FIVE ARRIVAL (RNAV)

(QWENN.QWENN5) 17AUG17

SALT LAKE CITY, UTAH  
SALT LAKE CITY INTL (SLC)