

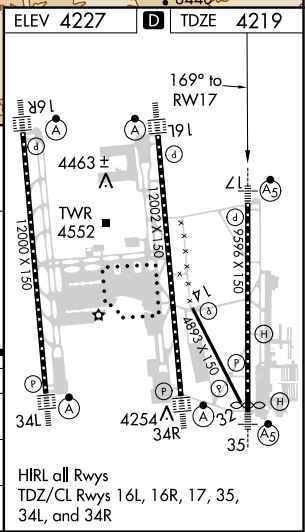
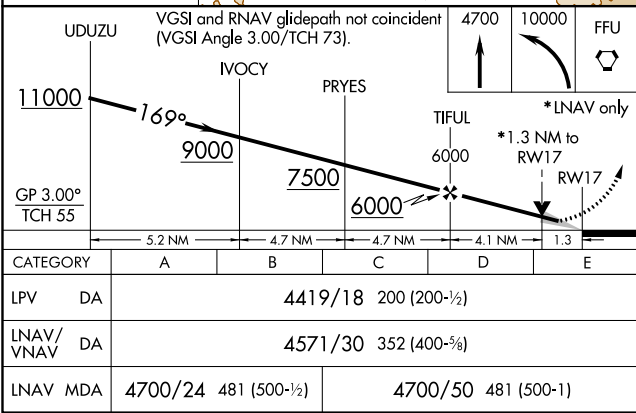
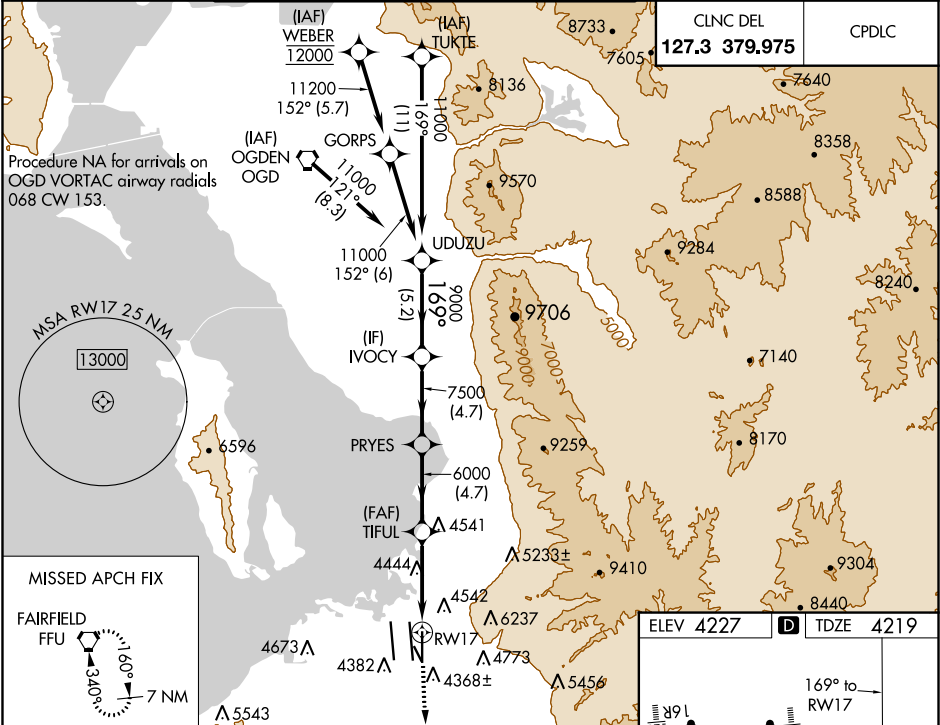
WAAS CH 82338 W17A	APP CRS 169°	Rwy Idg TDZE Apt Elev 9597 4219 4227
--	------------------------	--

RNAV (GPS) RWY 17
SALT LAKE CITY INTL (SLC)

▼ For uncompensated Baro-VNAV systems, LNAV/VNAV NA below -14°C (7°F) or above 49°C (121°F). DME/DME RNP-0.3 NA. For inop ALS, increase LPV Cat E visibility to RVR 4000, LNAV/VNAV Cat E visibility to RVR 6000, and LNAV Cat C/D/E visibility to 1½ SM. Simultaneous approach authorized. LNAV procedure NA during simultaneous operations. Use of FD or AP providing RNAV track guidance required during simultaneous operations.

MALSR 	MISSED APPROACH: Climb to 4700 then climbing left turn to 10000 direct FFU VORTAC and hold.
-----------	--

D-ATIS 124.75 125.625	SALT LAKE CITY APP CON 125.7 284.6	SALT LAKE CITY TOWER 119.05 257.8 (Rwy 16L-34R)	118.3 257.8 (Rwys 14-32, 17-35)	132.65 336.4 (Rwy 16R-34L)	GND CON 121.9 348.6 (Rwys 14-32, 17-35)	123.775 348.6 (Rwys 16L-34R, 16R-34L)
---	---	--	---	--------------------------------------	--	---



SW-4, 31 DEC 2020 to 28 JAN 2021

SW-4, 31 DEC 2020 to 28 JAN 2021