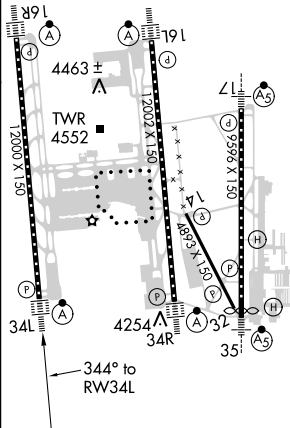


RNAV (GPS) RWY 34L
SALT LAKE CITY INTL (SLC)

MISSED APPROACH:
Climb to 4800 then
climbing left turn to
8100 direct STACO
and hold.

CLNC DEL	CPDLC
127.3 379.975	



CATEGORY		A	B	C	D	E
LPV	DA	4426/18 200 (200-½)				
LNNAV/ VNAV	DA	4577/30 351 (400-⅝)				
LNNAV	MDA	4660/24	434 (500-½)	4660/40	434 (500-¾)	

SW-4, 31 DEC 2020 to 28 JAN 2021