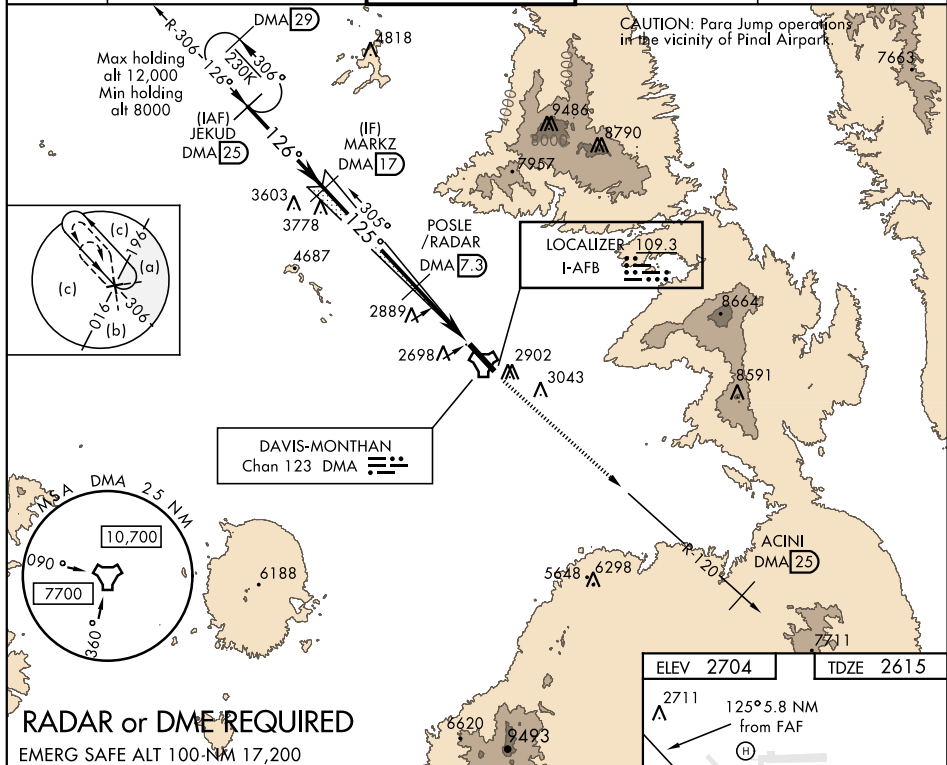


## HI-ILS or LOC Z RWY 12

LOC I-AFB <b>109.3</b>	APCH CRS <b>125°</b>	Rwy ldg <b>13,643</b> TDZE <b>2615</b> Arpt Elev <b>2704</b>	JAL-429 [USAF]	DAVIS-MONTHAN AFB (KDMA)
---------------------------	-------------------------	--	----------------	--------------------------

* Circling not authorized S of Rwy 12-30.	MISSED APPROACH: Climbing to 7900 intercept DMA TACAN R-120 to ACINI. Expect RADAR vectors.
---	---

ATIS* <b>270.1</b>	TUCSON APP CON 066°-274° <b>119.4 318.1</b> 275°-065° <b>125.1 269.55</b>	DAVIS-MONTHAN TOWER <b>118.85 253.5</b>	GND CON <b>121.8 275.8</b>	CLNC DEL <b>121.8 275.8</b>
-----------------------	---	--	-------------------------------	--------------------------------



RADAR or DME REQUIRED		ELEV 2704		TDZE 2615
VGSI and ILS glidepath not coincident (VGSI angle 3.00/TCH 58).		7900		ACINI DMA 25
JEKUD R-306		MARKZ		POSLE/RADAR
8000		6000		TACAN
GS 3.00° TCH 48		4500		IVOLOG
C		D		E
S-ILS 12		2865/40 250 (200-¾)		
S-LOC 12		3160-15% 545 (500-1%)		
CIRCLING*		3320-1¾ 616 (700-1¾)	3360-2 656 (700-2)	3440-2½ 736 (800-2½)

TUCSON, ARIZONA

32°10'N-110°53'W

DAVIS-MONTHAN AFB (KDMA)

Amdt 1 15AUG19

## HI-ILS or LOC Z RWY 12