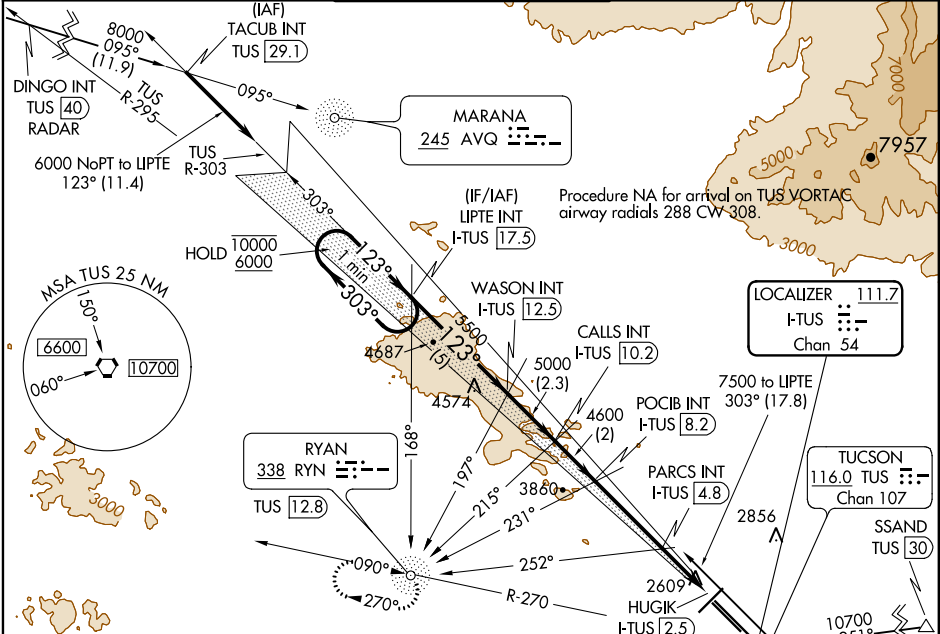


LOC/DME I-TUS 111.7 Chan 54	APP CRS 123°	Rwy Idg TDZE 2599 Apt Elev 2643
---	------------------------	---

ILS or LOC RWY 11L
TUCSON INTL (TUS)

ADF or RADAR required for arrivals at DINGO. ADF or DME required. DME required for arrivals at SSAND.	MALSR (AS)	MISSED APPROACH: Climb to 4000 then climbing right turn to 6000 on heading 300° and TUS VORTAC R-270 to RYN NDB/TUS 12.8 DME and hold.
For inop ALS, increase S-ILS Cat E visibility to RVR 4000, S-LOC 11L Cat E visibility to 2½ SM; PARCS FIX MINIMUMS: S-LOC 11L Cat C/D/E visibility to RVR 5500.		

ATIS 123.8 279.65	TUCSON APP CON 119.4 318.1	TUCSON TOWER 118.3 257.8	GND CON 124.4 348.6	CLNC DEL 126.65 326.2
-----------------------------	--------------------------------------	------------------------------------	-------------------------------	---------------------------------



Use I-TUS DME when on the localizer course.				
One Minute Holding Pattern				
LIPTTE INT I-TUS 17.5 WASON INT I-TUS 12.5 CALLS INT I-TUS 10.2 POCIB INT I-TUS 8.2 PARCS INT I-TUS 4.8 HUGIK I-TUS 2.5				
10000 6000 5500 5000 4600 4600 3480 4600 2609 2856 2853				
GS 3.00° TCH 55 VGS and ILS glidepath not coincident (VGS Angle 3.00/TCH 73).				
-5 NM -2.3 NM -2 NM -3.4 NM -2.3 NM -0.4 NM				
CATEGORY	A	B	C	D
S-ILS 11L	2800/24 201 (200-½)			
S-LOC 11L	3480/40	881 (900-¾)	3480-2	881 (900-2)
CIRCLING	3480-1 ¼	837 (900-1 ¼)	3480-2 ½	837 (900-2 ½)
PARCS FIX MINIMUMS				
S-LOC 11L	2960/24	361 (400-½)	2960/40	361 (400-¾)
CIRCLING	3160-1	3220-1	3220-1 ½	3220-2
517 (600-1) 577 (600-1) 577 (600-1 ½) 577 (600-2) 1157 (1200-3)				
HIRL Rwy 11L-29R MIRL Rwy 3-21 and 11R-29L REIL Rwy 21, 29L and 29R				
FAF to MAP 5.7 NM				
Knots 60 90 120 150 180 Min:Sec 5:42 3:48 2:51 2:17 1:54				

SW-4, 31 DEC 2020 to 28 JAN 2021

SW-4, 31 DEC 2020 to 28 JAN 2021