

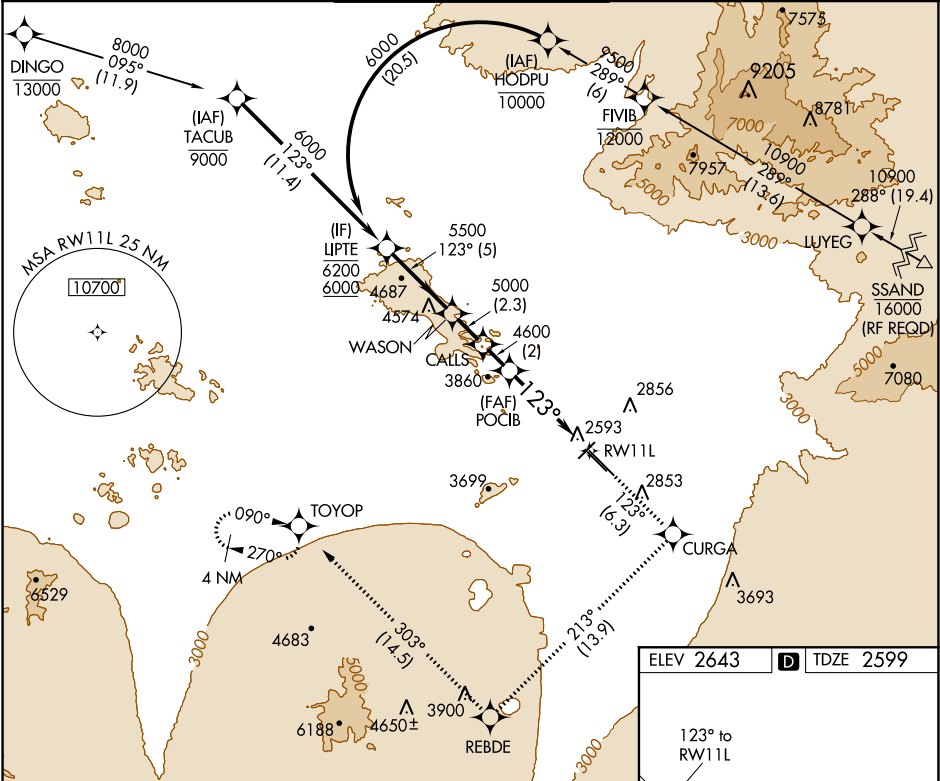
|         |          |       |
|---------|----------|-------|
| APP CRS | Rwy Idg  | 10996 |
| 123°    | TDZE     | 2599  |
|         | Apt Elev | 2643  |

# RNAV (RNP) Y RWY 11L

TUCSON INTL (TUS)

|   |       |  |
|---|-------|--|
| RNP AR APCH.  | MALSR | MISSED APPROACH: Climb to 6000 via 123° track to CURGA, 213° track to REBDE, 303° track to TOYOP and hold. |
| For uncompensated Baro-VNAV systems, procedure NA below -3°C or above 52°C. For inoperative MALSR, increase RNP 0.30 visibility to RVR 6000 all Cats. GPS required. |       |  |

|              |                |              |             |              |
|--------------|----------------|--------------|-------------|--------------|
| ATIS         | TUCSON APP CON | TUCSON TOWER | GND CON     | CLNC DEL     |
| 123.8 279.65 | 119.4 318.1    | 118.3 257.8  | 124.4 348.6 | 126.65 326.2 |



|  |                      |       |        |         |
|--|----------------------|-------|--------|---------|
| VGSI and RNAV glidepath not coincident (VGSI Angle 3.00/TCH 73). |                      |       |        |         |
| LIPT   | WASON                | CALLS | POCIB  | RWY 11L |
| 6200<br>6000   | 5500                 | 5000  | 4600   |         |
| Procedure Turn NA  |                      |       |        |         |
| GP 3.00°   |                      |       |        |         |
| TCH 55   |                      |       |        |         |
| 5 NM   | 2.3 NM               | 2 NM  | 6.1 NM |         |
| CATEGORY   | A                    | B     | C      | D       |
| RNP 0.30 DA  | 2947/40 348 (400-34) |       |        |         |

AUTHORIZATION REQUIRED

ELEV 2643 D TDZE 2599

123° to RWY 11L

TWR 2848

HIRL Rwy 11L-29R  
MIRL Rwy 3-21 and 11R-29L  
REIL Rwy 21, 29L and 29R

SW-4, 31 DEC 2020 to 28 JAN 2021

SW-4, 31 DEC 2020 to 28 JAN 2021