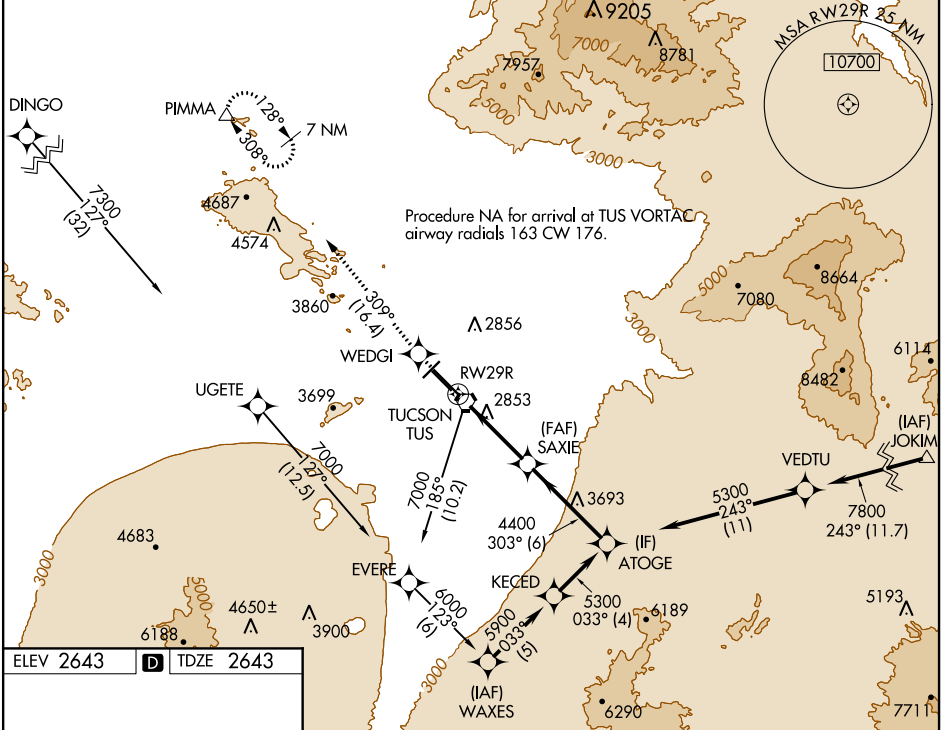


WAAS CH 82203 W29A	APP CRS 303°	Rwy Idg 10996 TDZE 2643 Apt Elev 2643
--	------------------------	--

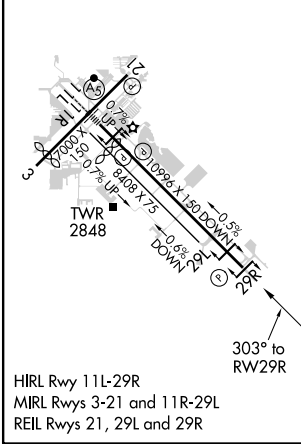
RNAV (GPS) Z RWY 29R

TUCSON INTL (TUS)

RNP APCH.		MISSED APPROACH: Climb to 6800 direct WEDGI and track 309° to PIMMA and hold.		
For uncompensated Baro-VNAV systems, LNAV/VNAV NA below -3°C or above 52°C.				
ATIS 123.8 279.65	TUCSON APP CON 119.4 318.1	TUCSON TOWER 118.3 257.8	GND CON 124.4 348.6	CLNC DEL 126.65 326.2



ELEV 2643	D	TDZE 2643
-----------	----------	-----------



6800	WEDGI	tr 309°	PIMMA	VGSi and RNAV glidepath not coincident (VGSi Angle 3.00/TCH 81).	
*LNAV only		*1.9 NM to RW29R	SAXIE	ATOGE	
			4400	5300	
			303°		
			GP 3.00°	TCH 53	
		1.9	3.4 NM	6 NM	
CATEGORY	A	B	C	D	E
LPV DA	2929-1 286 (300-1)				
LNAV/VNAV DA	3106-1½ 463 (500-1½)				3106-1¾ 463 (500-1¾)
LNAV MDA	3300-1 657 (700-1)	3300-1½ 657 (700-1½)	3300-2 657 (700-2)	3300-2 657 (700-2¼)	3300-2¼ 657 (700-2¼)
CIRCLING	3300-1 657 (700-1)	3300-1½ 657 (700-1½)	3300-2 657 (700-2)	3800-3 1157 (1200-3)	

SW-4, 31 DEC 2020 to 28 JAN 2021

SW-4, 31 DEC 2020 to 28 JAN 2021