

18144

CARGO NINE DEPARTURE (CARGO9•CARGO)

YUMA MCAS/YUMA INTL (KNYL)

YUMA, ARIZONA

ATIS ★
118.8 273.5
CLNC DEL
118.0 336.4
GND CON
121.9 314.0
YUMA TOWER ★
119.3 377.075
YUMA DEP CON
125.55 282.325
ASOS
256.4

SHL-511 [USN]

| Rwy | Knots | 60 | 120 | 180 | 240 | 300 | 360 |
|------|----------|-----|-----|-----|-----|------|------|
| 3L/R | V/V(fpm) | 225 | 450 | 675 | 900 | 1125 | 1350 |
| 26 | V/V(fpm) | 210 | 420 | 630 | 840 | 1050 | 1260 |
| 35 | V/V(fpm) | 241 | 482 | 723 | 964 | 1205 | 1446 |

ATC Climb Rate to 3600

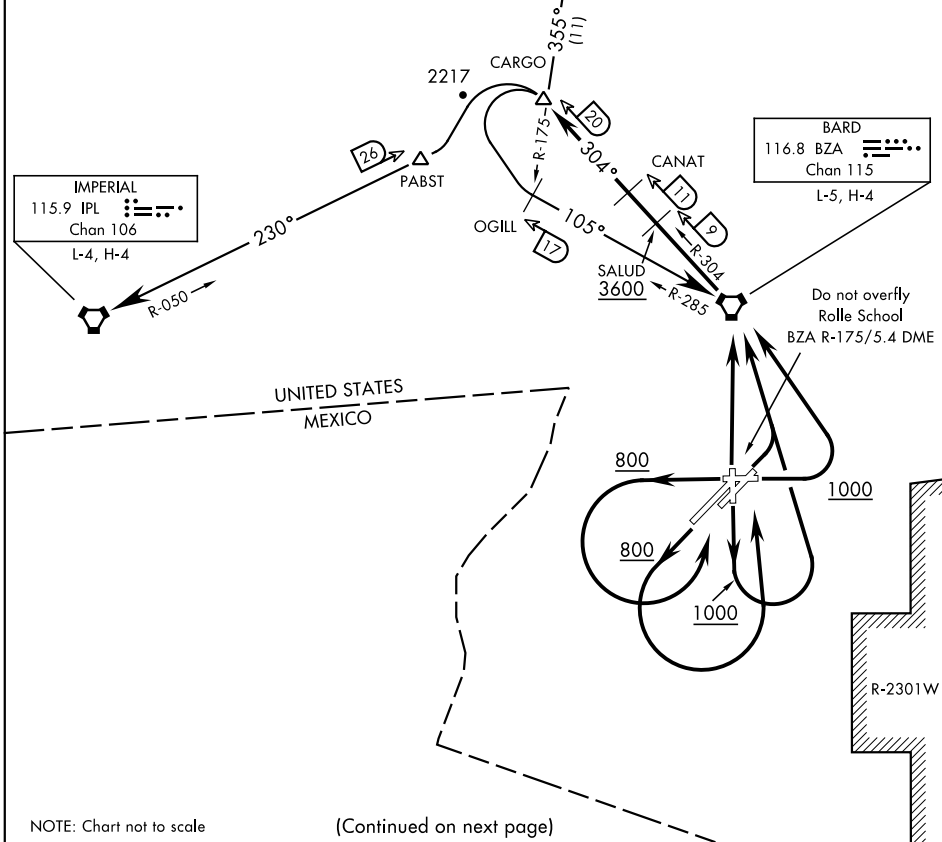
BLYTHE
117.4 BLH
Chan 121
L-4-5, H-4

This departure will be filed/assigned for aircraft not carrying external ordnance when radar services are not available.

Rwy 8: Do not exceed 270 KIAS until 1000
Rwy 35: Cross BZA VORTAC at or below 14,000
Max 300 KIAS until SALUD

IMPERIAL
115.9 IPL
Chan 106
L-4, H-4

BARD
116.8 BZA
Chan 115
L-5, H-4



NOTE: Chart not to scale

(Continued on next page)

CARGO NINE DEPARTURE (CARGO9•CARGO)

YUMA, ARIZONA

Orig 24MAY18

YUMA MCAS/YUMA INTL (KNYL)

SW-4, 31 DEC 2020 to 28 JAN 2021