

TACAN RWY 21R

YUMA MCAS/YUMA INTL (KNYL)

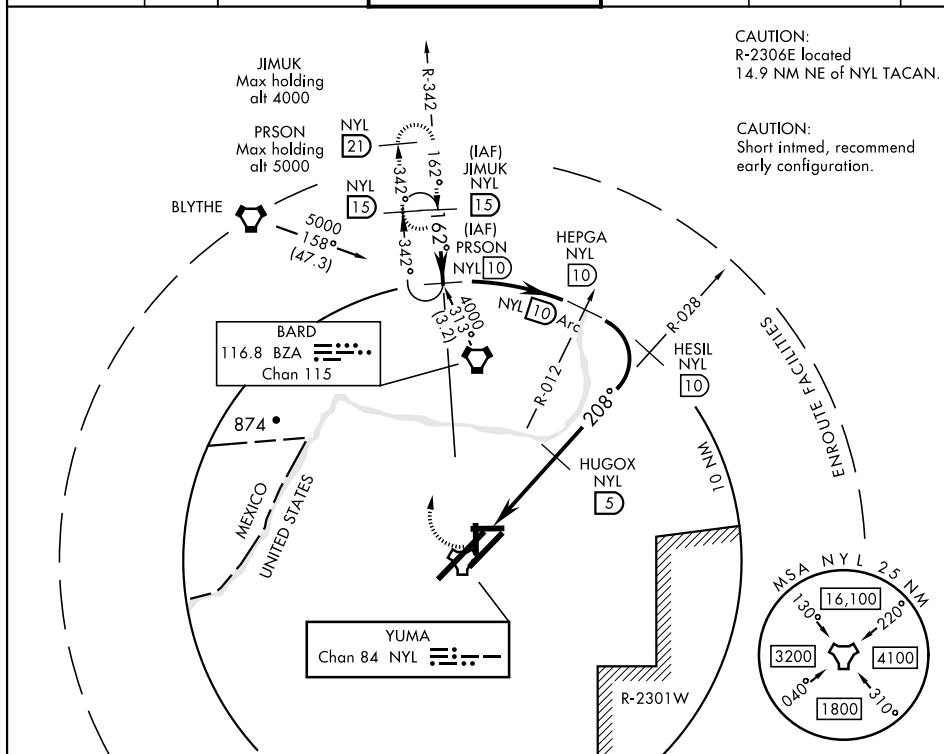
TACAN NYL Chan <b>84</b>	APCH CRS <b>208°</b>	Rwy Idg <b>13,300</b> TDZE <b>193</b> Arpt Elev <b>213</b>
-----------------------------	-------------------------	--

AL-511 [USN]



**MISSED APPROACH:** Climbing right turn to 4000 intercept NYL TACAN R-342 to JIMUK and hold, continue climb-in-hold to 4000.

ATIS ★	ASOS	YUMA APP CON	YUMA TOWER ★	GND CON	CLNC DEL	ASR/ PAR
118.8 273.5	256.4	124.7 371.975	119.3 (CTAF) 0 377.075	121.9 314.0	118.0 336.4	



EMERG SAFE ALT 100 NM 17,100

CATEGORY	A	B	C	D
S-21R *	640-½ 447	(500-½)	640- 7/8 447 (500- 7/8)	
CIRCLING	680-1 467 (500-1)	700-1 487 (500-1)	800-1½ 587 (600-1½)	800-2 587 (600-2)

ELEV 213 TDZE 193

3L-21R 13,300 x 200  
3R-21L 9239 x 150  
8-26 6146 x 150  
17-35 5710 x 150

208° to TACAN

0.3% UP

TWB 353

35'

1/2

337

REIL Rwy 35  
HIRL Rwys 3R-21L  
and 3L-21R  
HIRL Rwys 8-26  
and 17-35

YUMA, ARIZONA  
Amdt 5 20JUN19

32°39'N-114°36'W

YUMA MCAS/YUMA INTL (KNYL)

## TACAN RWY 21R

SW-4, 31 DEC 2020 to 28 JAN 2021

SW-4, 31 DEC 2020 to 28 JAN 2021