




WAAS CH 60920 W32A	APP CRS 318°	Rwy Idg 7800 TDZE 5045 Apt Elev 5050
--	------------------------	---

RNAV (GPS) RWY 32
RENO/STEAD (RTS)

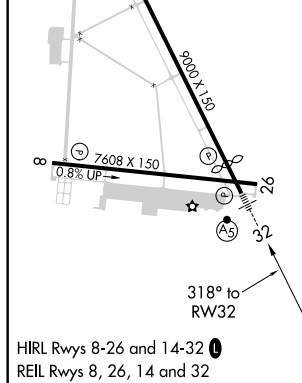
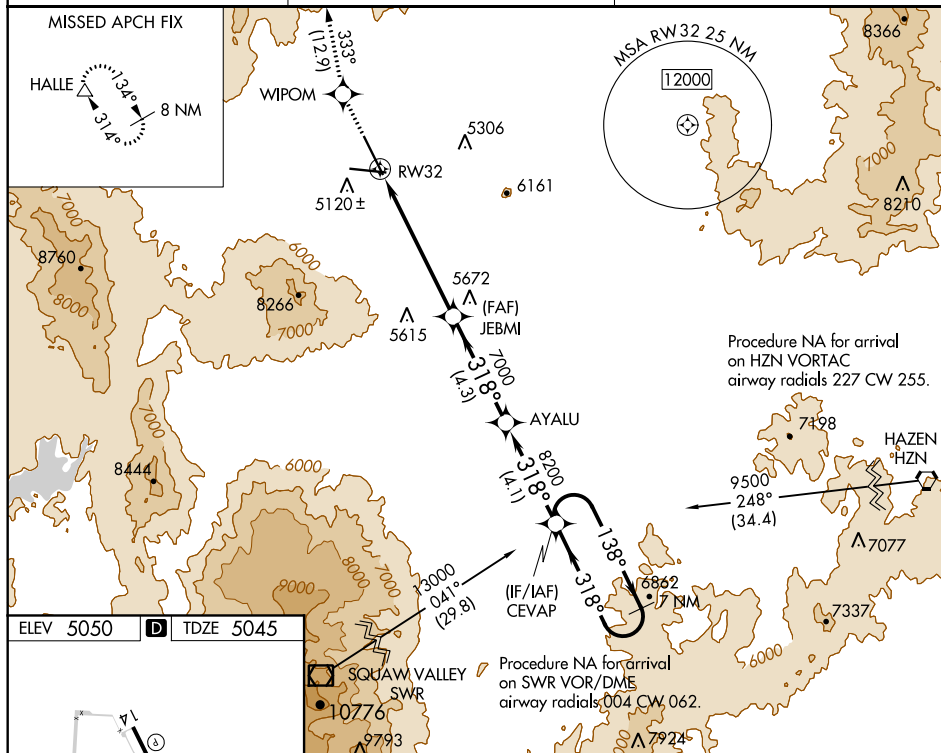
	When VGS I inoperative, Circling Rwy 8 NA at night. DME/DME
 NA	RNP-0.3 NA. When local altimeter setting not received, use Reno/
 -15°C	Tahoe Intl altimeter setting and increase all DA 115 feet and all MDA
	120 feet. Inoperative table does not apply. Circling NA for Cat D
	southwest of Rwy 14-32.

MALSR



MISSED APPROACH: Climb to 14000 direct WIPO and on track 333° to HALLE and hold, continue climb-in-hold to 14000.

AWOS-3 135.175	NORCAL APP CON 126.3 353.9	UNICOM 122.7 (CTAF) 0
--------------------------	--------------------------------------	---------------------------------



14000 ↑	WIPOM ✦	ir 333°	HALLE △	
<p>JEBMI 7000 AYALU 8200 CEVAP 9400 7 NM Holding Pattern 138° → ← 318° RW32 5.9 NM 4.3 NM 4.1 NM GP 3.00° TCH 40</p>				
CATEGORY	A	B	C	D
LPV DA	6533-6 1488 (1500-6)			
RNAV MDA	6840-1¼ 1795 (1800-1¼)	6840-1½ 1795 (1800-1½)	6840-3	1795 (1800-3)
CIRCLING	6840-1¼ 1790 (1800-1¼)	6840-1½ 1790 (1800-1½)	6840-3	1790 (1800-3)